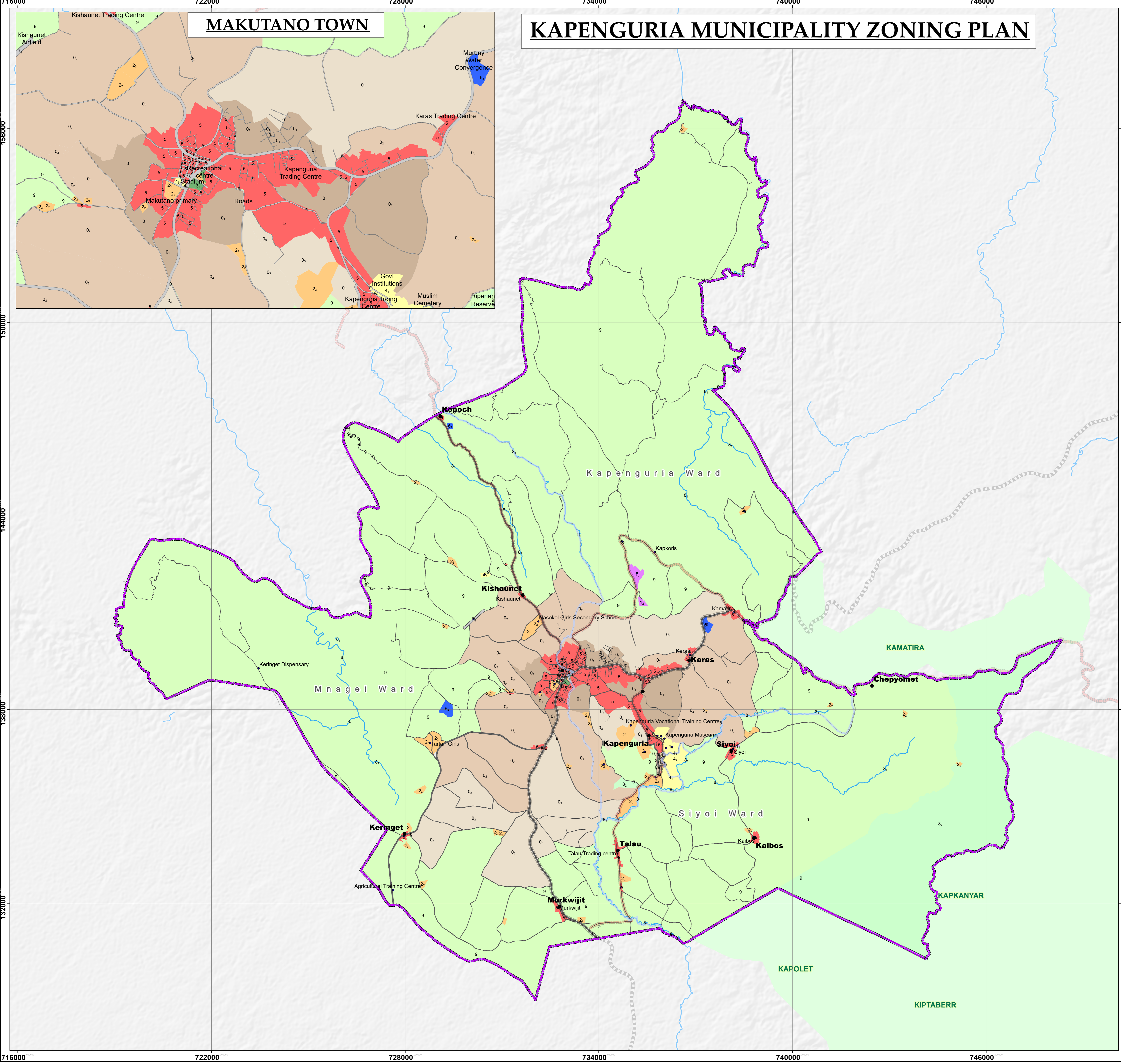


KAPENGURIA MUNICIPALITY ZONING PLAN



LAND USE	CODE	AREA IN HA
0- RESIDENTIAL		
High Density Residential	0 ₁	421.2
Medium Density Residential	0 ₂	2662.35
Low Density Residential	0 ₃	1853.9
1- INDUSTRIAL		
Heavy Industrial	1 ₁	22.55
Light Industrial	1 ₂	0.79
2- EDUCATIONAL		
Primary Schools	2 ₂	112.46
Secondary Schools	2 ₃	105.19
Tertiary Institutions	2 ₄	21.83
3- RECREATIONAL		
Open spaces	3 ₁	1.13
Stadium	3 ₂	2.23
4- PUBLIC PURPOSE		
Kapenguria Prison	4 ₁	29.51
Cemetery	4 ₂	26.31
Kishaunet Showground	4 ₃	3.95
Government institutions	4 ₄	31.45
Childrens Home	4 ₅	0.93
Places of Worship	4 ₆	1.57
5- COMMERCIAL		
Commercial areas	5	463.19
6- PUBLIC UTILITY		
Proposed Solid Waste Disposal	6 ₁	3.19
Booster communication Station	6 ₂	0.09
Muruny water Convergence	6 ₃	9.69
Sewer Treatment Plant	6 ₄	14.77
7- TRANSPORTATION		
Kishaunet Airfield	7 ₁	5.38
Proposed Bus park	7 ₂	0.65
Roads	7 ₃	491.51
8- CONSERVATION		
Riparian Reserve	8 ₁	220.41
Conservation Areas	8 ₂	2354.73
9- AGRICULTURAL		
Agricultural Land	9	24574.34

PREPARED BY:
 DIGIREG KENYA LIMITED
 Kenrail Towers-Ring Road
 Mkungu Close, Nairobi
 P.O. Box 49458-00100



Coordinate System: Arc 1960 UTM Zone 36N
 Projection: Transverse Mercator
 Datum: Arc 1960



I certify that this plan has been prepared and published as per the requirements of the Physical and Land Use Planning Act, 2019
 Registered and licenced physical planner
 Plan. Alfred Eshitera (PPR No. 0119)

Signature.....*[Signature]*.....Date.....10/02/2025.....

COUNTY GOVERNMENT OF WEST POKOT
 KAPENGURIA MUNICIPALITY LOCAL
 PHYSICAL AND LAND
 USE DEVELOPMENT/SPATIAL PLAN




RECOMMENDED BY:
 DIRECTOR OF PHYSICAL PLANNING WEST POKOT COUNTY

Signature.....*[Signature]*.....Date.....10/2/2025.....

CERTIFIED BY:
 DIRECTOR OF PHYSICAL PLANNING WEST POKOT COUNTY

Signature.....*[Signature]*.....Date.....10/2/2025.....

APPROVED BY:
 CECM, DEPARTMENT OF LANDS, PHYSICAL PLANNING, HOUSING AND
 URBAN DEVELOPMENT WEST POKOT COUNTY

Signature.....*[Signature]*.....Date.....10/2/2025.....

HANSARD NUMBER
 WPCA / HRD / 12-2-2025
 APPROVED LOCAL PHYSICAL AND LAND USE DEVELOPMENT PLAN
 WPC / LPLVDP / 1/2025