

COUNTY GOVERNMENT OF WEST POKOT

KAPENGURIA MUNICIPALITY SUSTAINABLE SOLID WASTE MANAGEMENT POLICY

CERTIFICATION

I certify that this Sustainable Solid Waste Management Policy has been prepared in accordance with the Sustainable Waste Management Act (No.31 of 2022).

Emily Cheyech Liman NEMA Registration: 8964



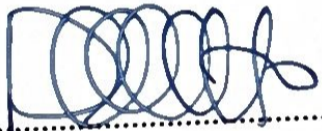
Signature:

2/2/2026

Date:

CERTIFIED BY:

**Mr. Donato Long'al
Municipal Manager**



Signature:

6/2/2026

Date:

**Mr. Kiptum Yator
Municipal Board Chair**



Signature:

6/2/2026

Date:

**Hon. Esther Chelimo
County Executive Committee Member (CECM)
Lands, Physical Planning, Housing & Urban Development.**

Signature:

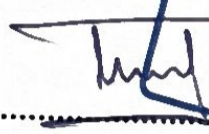
Date:

APPROVAL

APPROVED BY:

County Executive Committee Minutes No.

COUNTY SECRETARY
COUNTY GOVERNMENT OF WEST POKOT
17 FEB 2026
P.O. Box 222-30600,
KAPENGURIA



Jonathan Siwanyang
County Secretary, West Pokot

..... 17/2/2026
Date:



H.E. Simon Kitalei Kachapin, EGH
Governor, West Pokot County

WEST POKOT COUNTY
GOVERNOR
17 FEB 2026
Sign:
P.O. Box 222-30600, KAPENGURIA

..... 17/2/2026
Date:

FOREWORD BY THE CECM



Accumulated waste deposits are an indication of societal lifestyles, waste management practices and production technology. Some societies at the peak of their development have stagnated due to inadequate management of their waste leading to proliferation of disease; environmental degradation and ultimate impact on livelihoods.

Improper management of waste poses a threat to Climate Change and eventually in the achievement of sustainable development. Waste being one of the contributors of greenhouse gases, affects climate change and it is for this reason that as a country, we should develop sustainable waste management policies, technologies and initiatives

to curb this growing global challenge. Through our commitment to sustainable development, West Pokot County Government aims to balance the broader economic and social challenges of development and environmental protection. For this reason, the county government subscribes to the vision of a prosperous and equitable society living in harmony with our natural resources.

This is also reinforced in the constitution under the fundamental right to a clean and health environment. Sound environmental management entails use of waste reduction technologies, policies in production, sustainable product design, resource efficiency and waste prevention, re-using products where possible; recovering value from products. Although, elimination of waste entirely may not be feasible, systematic application of modern waste management systems should be explored and implemented. The challenge of waste management affects every person and institution in society. The measures set out in this strategy cannot be undertaken without a collective approach to waste challenges and the involvement of a broad range of stakeholders in their implementation.

HON. ESTHER CHELIMO
CEC-LANDS, HOUSING, PHYSICAL PLANNING AND URBAN DEVELOPMENT
WEST POKOT COUNTY

MESSAGE FROM MUNICIPAL BOARD CHAIR



Solid waste management remains one of the major challenges facing Kapenguria Municipality. The impact of the indiscriminate solid waste disposal continues to adversely affect service delivery and it's against this background that Kapenguria Municipal Board has developed a solid waste Management Policy which will also incorporate the emerging issues in the management of solid waste.

The purpose of this policy is to provide a framework to address solid waste problem in the municipality and aims at achieving zero waste generation. It will also ensure that the Municipality, in collaboration with other stakeholders, is able to sustain the provision of adequate

quality services in solid waste management and establish appropriate response to solid waste management challenges

This policy is also an affirmation of the Board's commitment to intensify its campaign against improper disposal of solid waste onto the environment and ensure a harmonized society in the Municipality. The ultimate goal of this policy is to guarantee the residents of Kapenguria municipality a clean, health and safe environment as enshrined in the constitution.

I wish to thank Municipality manager and her team and representatives for various departments in the County for their efforts and commitment in the development of this policy. I also wish to thank all stakeholders who participated in one way or another in making the policy.

MR. YATOR KIPTUM
CHAIRMAN
KAPENGURIA MUNICIPAL BOARD

ACKNOWLEDGEMENT



All residents residing in Kapenguria municipality and its environment are entitled to a clean and healthy environment. The Environment Management and Co-ordination Act 1999 is guided with among others the following principles of public participation in the development of policies, plans and processes for the management of the environment. In line with the principle of inter -generational and intra-generational equity, the polluter-pays principle and the precautionary principle. Solid Waste Management is one of the biggest challenges to the Kapenguria Municipal Board in its endeavor to provide a clean and healthy environment to the residents of Kapenguria Municipality

It is with this spirit that the municipal board strived to develop this policy which will assist the public and institutions involved to be a 7R oriented society, by Reducing, refusing; Recycling, Reusing, Repairing and Refilling their waste.

All the efforts were driven towards compliance with the Environmental Management and Coordination Act of 1999 and Environmental Management and Coordination, Waste Management Regulations of 2006 in order to ensure a clean and healthy environment for all, keeping in line with the Article 42, of the Constitution of Kenya 2010.

Finally, I wish to extend my deepest gratitude to all those who participated in coming up with this policy. My gratitude also goes to my colleagues who gave critical comments towards finalization of this policy. My call is for all of us to cooperate in delivering quality and efficient service to the Municipality citizens through this policy.

MR. DONATO LONGAL
MUNICIPAL MANAGER
KAPENGURIA MUNICIPALITY

ABBREVIATIONS

CBOs:	Community Based Organizations
CSOs:	Civil Society Organizations
ISWM:	Integrated Solid Waste Management
KMB:	Kapenguria Municipal Board
KIE:	Kenya Industrial Estates
NEMA:	National Environment Management Authority
NGOs:	Non-Governmental Organization
PCs:	Private Companies
PS:	Private Sector
PPP:	Public Private Partnership
SMEs:	Small Scale Enterprises
SWM:	Solid Waste Management
MRF:	Material Recovery Facility
CIDP:	County Integrated Development Plan
CGW:	County Government of West Pokot
GIS:	Geographic Information Systems
KNCCI:	Kenya National Chamber of Commerce
PPPs:	Public Private Partnerships

TABLE OF CONTENTS

Certification	iii
Approval	v
Foreword by The CECM	vii
Message From Municipal Board Chair.....	viii
Acknowledgement	ix
Abbreviations	x
Table of Contents	xi
List of Tables	xii
List of Figures.....	xiii
Chapter 1: Introduction	1
1.2 Population Size.....	3
1.3 Kapenguria Municipal Board (Kmb).....	4
1.4 Policy Development Process.....	4
1.5 Policy Goal,Vision And Mission.....	4
1.6 Policy Objectives	5
1.7 Guiding Principles.....	5
Chapter 2: Situational Analysis	7
2.1 Situational Analysis	7
2.2 Waste Streams In Kapenguria Municipality.....	11
2.3 Current Waste Management Practices.....	14
Chapter 3: Legal And Institutional Framework.....	17
3.1 Introduction.....	17
3.2 Global Policy Related To Solid Waste Management.....	17
3.3 National Policies And Acts Related To Waste Management.....	17
3.4 County Policies And Act Related To Solid Waste Management	19
Chapter 4: Policy Interventions	20
4.0 Introduction.....	20
Chapter 5: Policy Implementation Framework	27
5.0 Institutional Framework	27
5.1 Planning And Performance Management.....	28
5.2. Legal And Administrative Reforms.....	28
5.3 Collaboration With National And County Governments.....	28
5.4 Staff Capacity Development.....	28
5.5. Stakeholders' Involvement.....	28
Chapter 6: Monitoring And Evaluation	31
6.0 Policy Monitoring And Evaluation.....	31
6.1 Introduction.....	31
6.2 Design Of Indicators	31
6.3 Methods And Tools For Data Collection	31
6.4 Monitoring OfThe Policy	31
6.5 Evaluation Plan	31
6.6 Reporting And Dissemination	31
6.7 Feedback Mechanism.....	32
Annexes.....	33

LIST OF TABLES

Table 1: Administrative Structure.....	17
Table 2: Kapenguria Municipality Population (Source:KNBS,2019).....	17

LIST OF FIGURES

Figure 1: Kapenguria Municipality Base Map	16
Figure 2: Existing and Proposed Transfer Stations.....	22
Figure 3: Existing Transfer Stations	22
Figure 4: Types of Waste Generated at Household Level.....	23
Figure 5: Kapenguria Municipal Garbage Collection	23
Figure 6: Household Solid Waste Disposal.....	24
Figure 8: Kapenguria Municipality Open Dumpsite. Source: Field Survey, 2023.....	25
Figure 9: Kapenguria Dumpsite, existing fence. Source: Field Survey, 2023.....	25

CHAPTER 1: INTRODUCTION

Solid waste management remains one of the development challenges globally, nationally and at the county and municipality level. Solid waste is inevitable due to ordinary human activities such as consumption at household level, construction and commercial processes among others. However, managing solid waste has health, environmental, social and economic implications. Consequently, public interventions in solid waste management coupled with engagement with private actors are required in order to achieve optimal results.

This policy provides for the guiding framework for solid waste management in the municipality. The policy shall guide the Municipality solid waste management actors by providing effective, efficient and sustainable services while utilizing solid waste as an economic resource. Kapenguria municipality is located in West Pokot County and comprises three administrative wards, Mnagei, Kapenguria and Siyoi and eight locations which include Kishaunet, Kapkoris, Kapenguria, Kaisakat, Talau, Kaibos, Keringet and Mnagei. Locations and 24 sub locations with its headquarters in Kapenguria town.

The Municipality lies at the Latitude 1 degree 13' 48' North and Longitude of 35° 7' 12". The Municipality is characterized by a variety of topographic features. Kapenguria municipality is 2300 meters above sea level. A portion of one of the gazetted forests, Kamatira, is within the Municipality. Though there are small rivers within Municipality which supply water to the residents Kotoruk river is the major source of water in Kapenguria Town.

Kapenguria municipality has a bimodal type of rainfall. The long rains fall between the months of April and August while the short rains fall between October and December. The municipality receives a rainfall of 1600 mm per year. The average annual temperature of the Municipality is 150 degree Celsius. The high-altitude areas with moderate temperatures experience high rainfall and low evapotranspiration hence suitable for crop production. Kapenguria municipality has 3 wards, 8 locations and 24 sub locations. The table below represents the existing administrative units in terms of Locations and Sub locations.

Figure 1.:Kapenguria Municipality Base Map

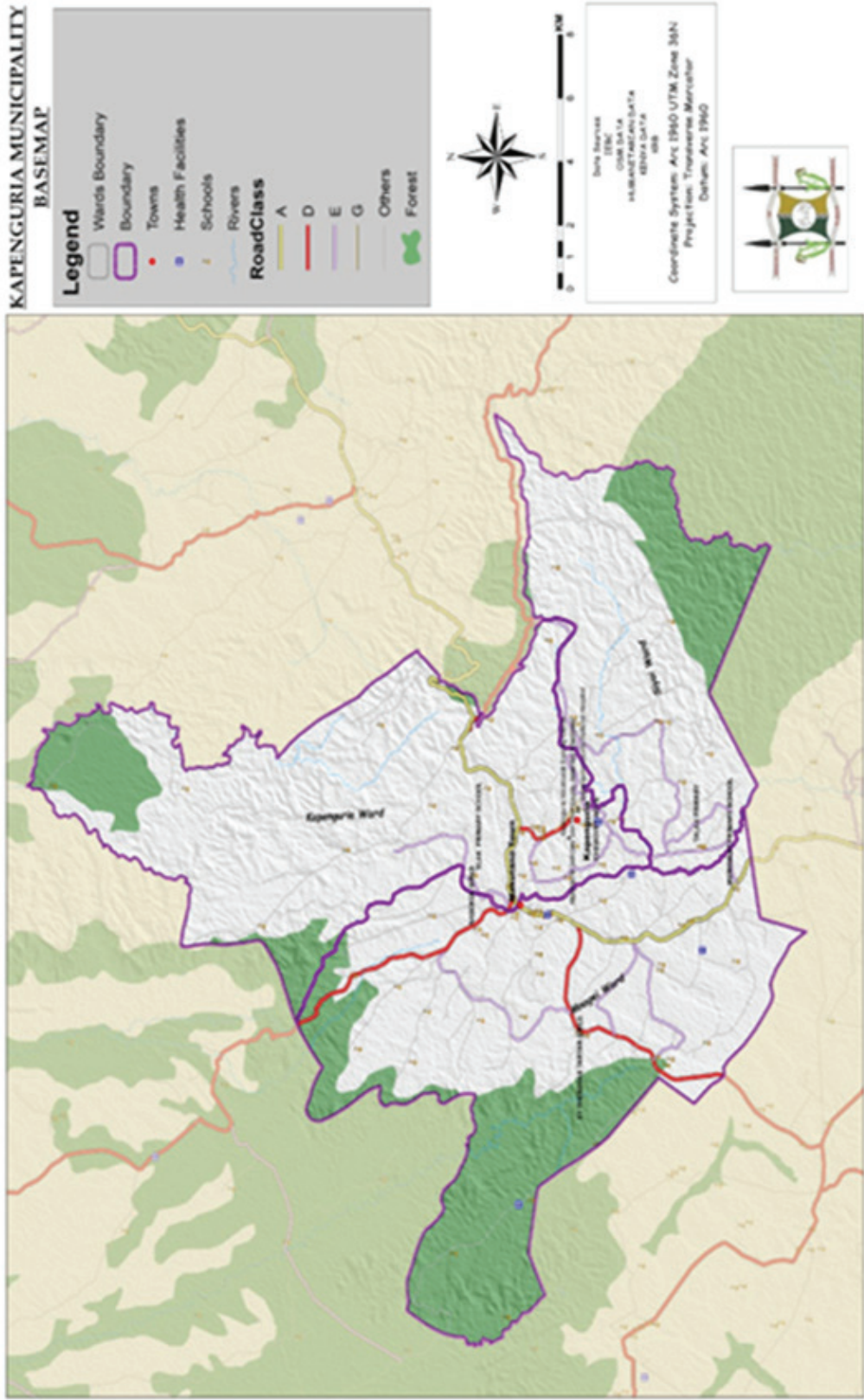


Table 1: Administrative Structure

NO.	LOCATION	SUB LOCATION
1	KISHAUNET	Kishaunet Sukut Lityei
2	KAPKORIS	Chemwochoi Tilak Kaprom
3	KAPENGURIA	Chewoyet Mwotot Kapenguria
4	KAISAKAT	Siyoi Paraywa Kapchila
5	TALAU	Chepkoti Kapsurum Talau
6	KAIBOS	Kipkorinya Kaibos Kapkatet
7	KERINGET	Lokomoi Cheptuya Morotome
8	MNAGEI	Tartar Keringet Psigirio

1.2 Population size

Population of the municipality according to the 2019 Kenya National Population and Housing Census is 96,813 people.

Table 2: Kapenguria Municipality Population (Source:KNBS,2019)

Locality	2019			2035		
	Male	Female	Total	Male	Female	Total
Chemwochoi	2,928	3,113	6,041	4,160	4,423	8,584
Kaibos	2,739	2,246	4,985	3,892	3,191	7,083
Kaisakat	4,867	4,663	9,530	6,916	6,626	13,542
Kapenguria	9,794	10,053	19,847	13,917	14,285	28,201
Kapkoris	6,848	6,987	13,751	9,731	9,928	19,659
Keringet	1,981	2,033	4,014	2,815	2,889	5,704
Kishaunet	9,538	9,567	19,105	13,553	13,594	27,147
Mnagei	9,076	9,169	18,245	12,896	13,029	25,925
Talau	3,250	3,139	6,389	4,618	4,460	9,078
TOTAL	51,021	50,970	101,907	72,497	72,425	144,923

1.3 Kapenguria Municipal Board (KMB).

Kapenguria Municipal Board is established pursuant to Article 184 of the Constitution of Kenya and the Urban Areas and Cities Act CAP 275 of the Laws of Kenya. The Board was inaugurated on 16 March 2023 following the approval of the Municipal Charter by the County Assembly of West Pokot.

The Board has nine members headed by the Chairman and the Municipal Manager who is the secretary and head of the municipality. The charter spells out the mandate of the Board and key among them being Solid Waste Management (SWM).

Kapenguria Municipal Board Mandate.

The Mandate of Kapenguria Municipal Board is drawn from the Urban Areas and Cities Act, CAP 275 of the Laws of Kenya and the Kapenguria Municipal Charter. Which include:

- Overseeing the affairs of the Municipality
- Developing and adopting policies, plans, strategies and programs, and setting targets for delivery of services
- Formulating and implementing integrated development plan for the Municipality by controlling land use, land subdivision, land development and zoning by public and private sectors for any purpose, including industry, commerce, markets, shopping and other employment centers, residential areas, recreational areas, parks, entertainment, passenger transport, agriculture, and freight and transit stations within the framework of the spatial and master plans for the Municipality as may be delegated by the County government
- Promoting and undertaking infrastructural development and services within the Municipality as may be delegated by the County Government
- Developing and managing schemes,

including site development in collaboration with the relevant National and County agencies

- Maintaining a comprehensive database and information system of the administration and providing public access thereto upon payment of a nominal fee to be determined by the Board
- Administration and regulating of internal affairs and
- Implementation of applicable National and County legislation

1.4 Policy development process.

This policy was developed through a consultative process. The key policy actors in solid waste management in the municipality were engaged during the preparation process. Specifically, national, county and municipality departments involved in solid waste management, including National Environment Management Authority (NEMA), County departments in charge of public health, and the Environment department from the county were consulted. In addition, NGOs and private actors in solid waste management such as, waste sorters and recyclers participated in the process.

The municipality has a diverse background comprising of urban and rural set-ups as well as rich ethnic, racial, and cultural diversity with the Pokot being the dominant community.

1.5 Policy Goal, vision and mission

Policy Goal

To guarantee the residents of Kapenguria municipality a clean, health and safe environment as enshrined in the constitution

Vision

We envision a municipality that sustainably manages its solid waste in compliance with

the new Solid Waste Management Act of 2022

Mission

To promote a sustainable, effective and integrated solid waste management system.

1.6 Policy Objectives

- Promote awareness on solid waste management
- Resource mobilization to develop a sustainable waste management system
- Establish environmentally sound infrastructure systems for waste collection, transportation and disposal
- Promote and establish waste segregation and recycling systems
- Encourage collaborations with research institutions and promote the adoption of new technologies for sustainable waste management.
- Formulate the appropriate legislation on waste management
- Engage Private waste collectors to manage solid waste

1.7 Guiding Principles

The implementation of this Policy will be guided by the following principles:

- **Right to a clean and healthy environment:**

Under the Constitution, 2010 every person in Kenya has a right to a clean and healthy environment and a duty to safeguard and enhance the environment.

- **Right to sustainable development:**

The right to development will be respected taking into account economic, social and environmental needs. Kenya seeks to achieve people- centered development that builds human capabilities, improves people's wellbeing and enhances quality of life.

- **Principle of Environmental Protection:**

There is need to balance socio economic

development and environmental protection. In undertaking waste management, all entities and individual should provide high level of human, health and environmental protection

- **Principle of Proximity:**

To minimize environmental impact and transport costs. In accordance with the principle of proximity, waste should be processed, treated and disposed of as much as possible to the location of its generation.

- **Precautionary Principle:**

The principle states that measures should be taken even if some causes and effects are not fully established scientifically when an activity or product raises threat or harm to human health or the environment.

- **Polluter pays principle:**

The principle states that those who produce pollutants or waste should bear the costs of managing it to prevent damage to human health or the environment.

- **Zero Waste principle:**

The principles states that society should aim for zero waste, designing and managing products and processes that reduce and eventually eliminate the volume and toxicity of waste, to conserve and recover waste resources rather than to burn or bury them. The Waste hierarchy establishes preferred program priorities based on zero waste principle and sustainability. The standard outline of the hierarchy ranks 6 approaches to waste management. In order (most preferable to least preferable) these are: prevention, minimization, reuse, recycle (including composting), energy recovery and disposal.

- **Extended producer responsibility:**

The principle states that producers should be given significant responsibility financially

and/or physically for the treatment or disposal of the waste from the products they create. Beyond easing government budgets for waste management, such responsibility in incentives companies to prevent wastes at the source, promoting more environmentally friendly product design and supporting the achievement of public recycling and materials management goal

- **Systems of deposit:**

When buying certain products, the buyer shall pay a certain added value to the price of the product, which shall be returned to him/her upon restitution of the used products and the packaging to the seller, provided that there is a possibility for using the product.

- **Partnership:**

Building partnerships, collaboration and synergies among various stakeholders from the public, government, non-governmental organizations, civil society and private sector, as well as vulnerable communities and populations including women and youth, will be prioritized to achieve effective implementation of this Policy. The private sector will be encouraged to develop capacities for investment, construction and service delivery in recycling and waste management.

- **Devolution and Cooperative government:**

embracing a system of consultation, negotiation and consensus building in implementation of sustainable waste management between and within the National and County governments.

- **Equity and social inclusion:**

ensuring a fair and equitable allocation of effort and cost as well as plough back benefits in the context of the need to address disproportionate vulnerabilities, responsibilities, capabilities, disparities and inter/ intra generational equity. The communities that benefit from sustainable waste management will be actively involved in planning and decision making.

- **Integrated Solid Waste Management**

This is a principle that uses various approaches of sustainable waste management. It establishes the preferred of solid waste management alternatives as follows: waste prevention, reduction, reuse, recycling, resource recovery, incineration, and land filling, with prevention as the most preferred method in the hierarchy.

- **Inter and intra-generational equity**

This principle is about fairness — who bears the costs and who enjoys the benefits of waste management, both now and in the future. Today's waste problems should not be pushed onto certain groups while others enjoy clean environments

CHAPTER 2: SITUATIONAL ANALYSIS

2.1 Situational Analysis

West Pokot County and Kapenguria municipality has a growing human population and an increase in urbanisation. Kapenguria being the First most urban centers have attracted a large population of informal settlement dwellers and the middle class. This has consequently led to increased waste generation and complexity of the waste streams.

Despite the existence of National laws and policies guiding waste management, weak implementation and poor practices have led to the municipality being overwhelmed by its own waste, consequently

Solid waste generated in the rural parts of the municipality is disposed within the households mainly through disposal in pits or open burning. Most biodegradable waste such as agricultural or human food waste is reused as food for farm animals. Non-biodegradable waste such as containers are reused for other household uses such as storage. Market centers in the municipality generate most of the municipal waste in substantial quantities due to high population density.

Most of the solid waste generated in other market Centres in the municipality is disposed of in open grounds. Most solid waste is disposed of in the same form as it was generated without being recycled or reused or recovered or segregated.

Open disposal of solid waste has continuously posed a negative environmental health impact through leachate and direct flow into water sources. In addition, the disposal methods in the Municipality have been a contributor to public nuisance. There is limited investment in solid waste recycling and recovery systems in the Municipality.

Collection and transportation of solid waste generated at households is mainly done by the County government. The county government provides solid waste collection and transportation services in the municipality.

The county government has put in place waste collection receptacles in strategic places in Kapenguria town. This however is below the desired optimal level.

The county government has made budgetary allocation for solid waste collection, but the allocation has been below desired financial investment for solid waste management system. The municipality is currently collecting waste from transfer stations stationed with receptacles. its incapacity to reach other areas which are uncovered now is because of lack of enough receptacle's equipment. The following Map shows current transfer stations, proposed transfer stations and non-designated disposal

Figure 2: Existing and Proposed Transfer Stations

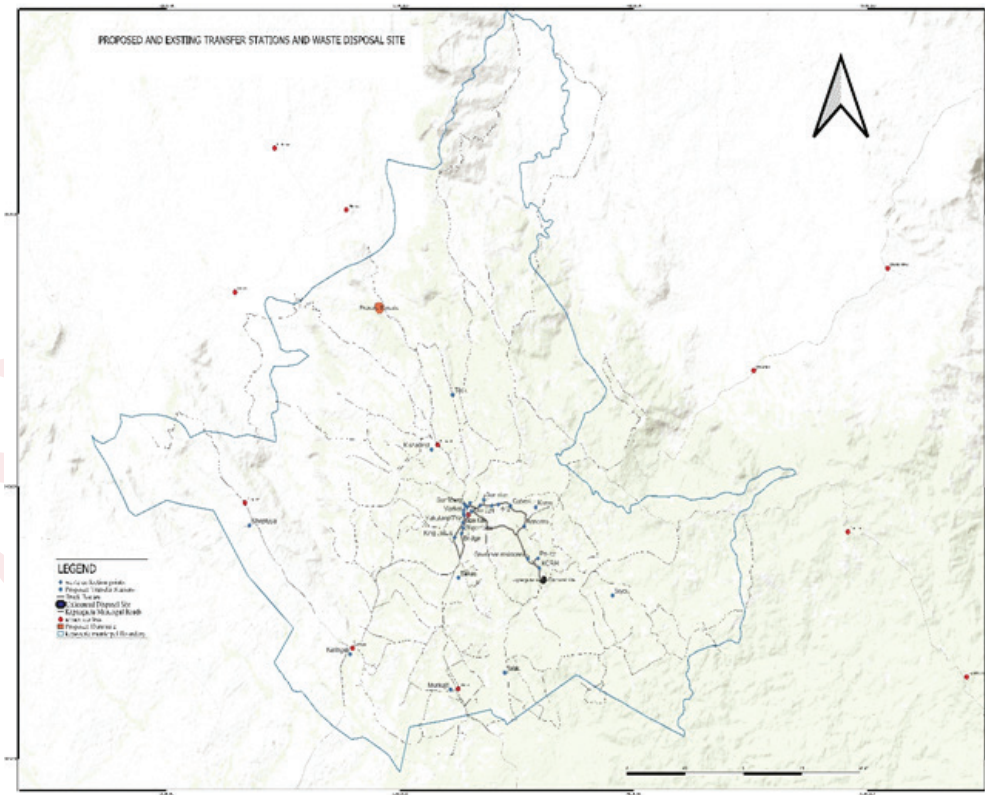
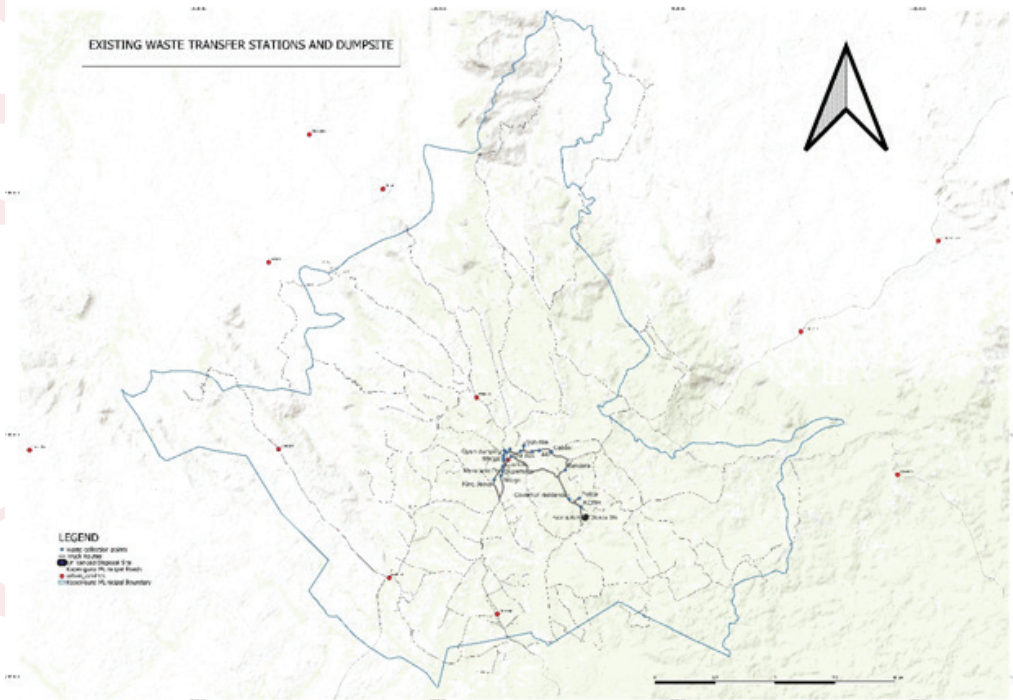


Figure 3: Existing Transfer Stations

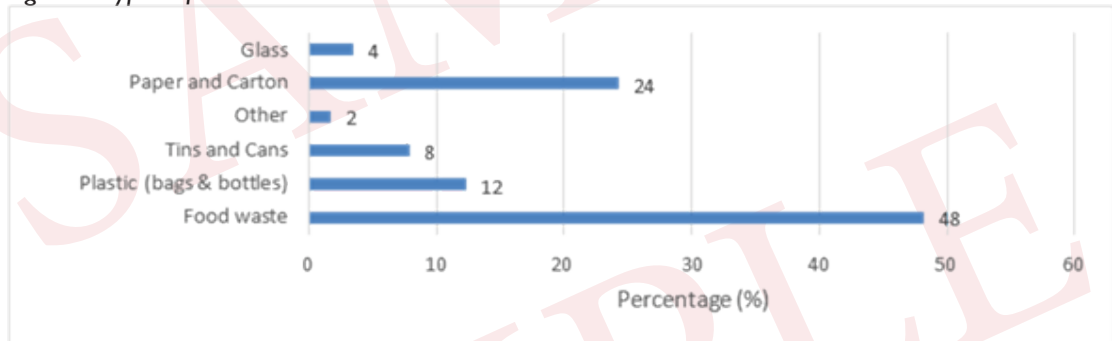


2.1.1 Waste generated and their percentages

Waste streams in Kapenguria Municipality are largely composed of inorganic materials such as bottles, paper, plastic containers, polythene bags, and old clothes, as well as organic waste like food scraps, and vegetable peels.

Majority of household waste is food waste, accounting for 48%, as shown in figure 4. Paper and cartons make up 24%, plastics (bags and bottles) account for 12%, while tins, cans, and glass together account for another 12%. Approximately 72% of the waste is biodegradable and can undergo biological decomposition, while 24% is non-degradable.

Figure 4: Types of Waste Generated at Household Level



2.1.2 Solid waste generation

Kapenguria generates approximately 7 tonnes of solid waste daily, of which only 4 tonnes are collected by the Municipality. The current state of waste collection (see figure 5) in the municipality is inadequate, with 53% of respondents rating it as fair and only 15% considering it good. Waste collection is limited to the urban core, leaving out surrounding areas such as Kishaunet, Kibos, Murkwijit, and Siyoi. The town has two open lorries for collecting waste that are serviceable and are able to collect waste daily. In rural areas, waste is typically disposed of by feeding it to livestock or dumping it in open fields or ditches. To aid waste collection, the West Pokot County government has placed bins at strategic locations within the town. Solid waste management services, however, are not extended to secondary towns, and in some markets, residents dispose of waste in open spaces or shallow pits.

Figure 5: Kapenguria Municipal Garbage Collection

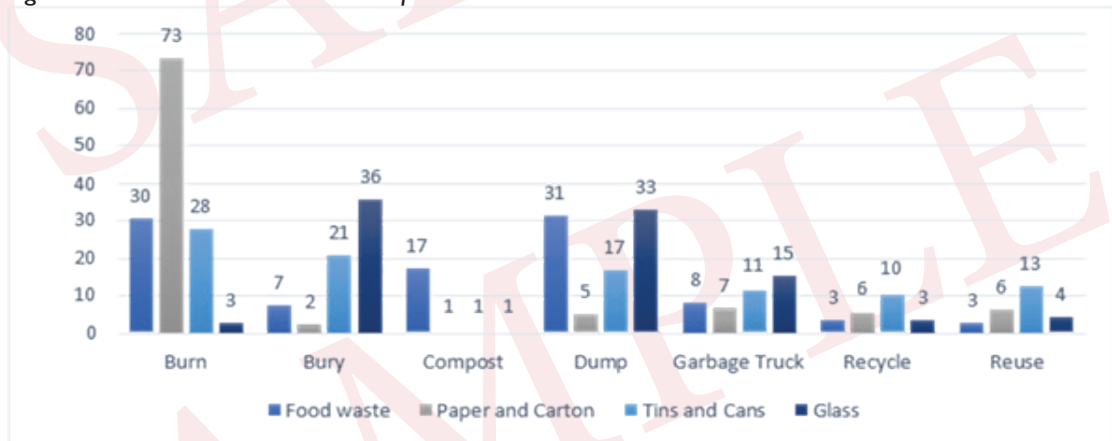


2.1.3 Solid waste disposal

In rural, agricultural areas, waste disposal practices often involve feeding organic waste to livestock or dumping it in the fields, with both organic and inorganic materials being discarded. Waste sorting at the source is rare and public bins are not evenly distributed within the municipality with 87.6% of the household confirming they do not have access to public bins. Approximately 73% of households burn their paper and cardboard waste, while 36% bury their glass waste, and 33% dispose of it through dumping, see Figure 6. Only 17% of households compost their food waste, and 4% reuse their glass waste.

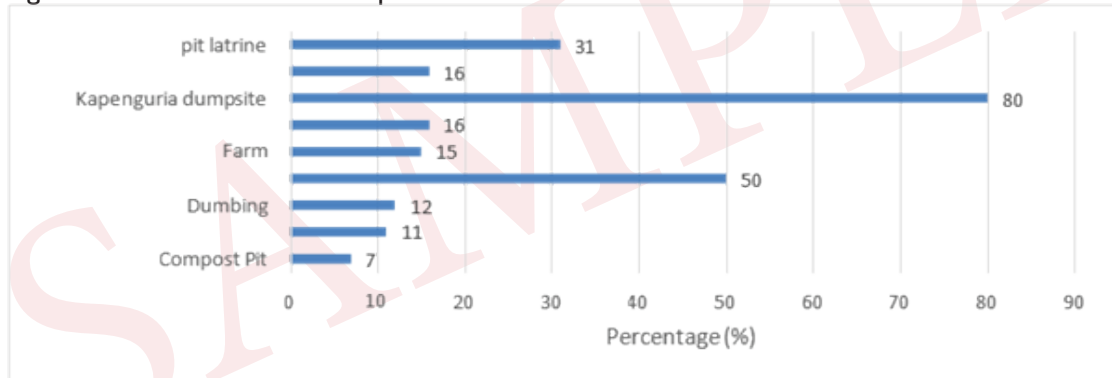
Burning is the most prevalent method and contributes to air pollution by releasing particulate matter and greenhouse gases. Glass burial can lead to soil contamination and reduced fertility while dumping indicates a lack of accessible waste collection points

Figure 6: Household Solid Waste Disposal



80% of the household dispose their waste in Kapenguria Municipality dumpsite, Figure 7, and plate 1 located adjacent to the Kapenguria County Referral Hospital, and on land originally designated for a cemetery. Open dumping is common in the area, and no service fees are charged for waste collection or disposal at the site. The location of the dumpsite is unsuitable, particularly given its proximity to the hospital and other sensitive land uses, such as river valleys and the natural planted forest.

Figure 7: Location of Waste Disposal



The site is poorly fenced, see Plate 2, and is easily accessible to animals, children, and others,

exposing them to serious health risks. Additionally, the dumpsite is a refuge for homeless individuals who scavenge for plastics and metals to sell to local dealers. While scavenging helps reduce waste at the site through recycling, it poses significant health risks.

Figure 8: Kapenguria Municipality Open Dumpsite. Source: Field Survey, 2023



Figure 9: Kapenguria Dumpsite, existing fence. Source: Field Survey, 2023



2.2. Waste streams in Kapenguria Municipality

2.2.1 Domestic waste

Domestic waste is also referred to as garbage, refuse or trash and forms high percentage of the waste generated within Kapenguria Municipality. It consists mainly of biodegradable waste which is food and kitchen waste, human waste, latrine and toilet effluents, green wastepaper and non- biodegradable such as plastics, glass bottles, cans, metals and wrapping materials. There is no proper way of managing this waste in the municipality. Plastics and Scrap metals are recovered by Informal Waste groups. High Percentage end up in disposal Site and others are illegally dumped. The municipality hopes to relocate the existing disposal.

2.2.2 Waste Tyers

Waste Tyers which forms low percentage of the total waste is an emerging waste stream that has reached their end of life due to wear or damage and cannot be recycled or reused. There are no established formal systems for collection and recycling of tires with the exception of retreading. As such the bulk of the tyers are informally collected and often illegally burnt in the open to recover steel for recycling. This emits harmful gasses causing air pollution and soil contamination arising from the residues.

(Management of waste tyres should be guided by the Environmental Management and Co-ordination Act (1999), the Waste Management Regulations (2024), the Extended Producer Responsibility Regulations (2024), Air Quality Regulations (2024), and relevant public health and occupational safety laws.)

2.2.3 Construction and demolition waste

This waste forms smallest percentage of the total waste produced and it is generated as a result of new construction works, remodeling or demolition. Construction waste comprises debris, steel, timber, iron sheets, tiles and ceramics among others. Although construction and demolition waste are not classified as hazardous, it is a mixed waste source that requires separation into component parts for the purposes of recycling. These wastes currently end up in the disposal sites or are used for backfilling in our road networks within the municipality and also in the County. Sometimes this waste ends up in Disposal site. The development of this policy will ensure management of this type of waste.

2.2.4 Biomedical Waste

Biomedical waste also referred to as medical waste forms low percentage of total waste produced and it refers to waste generated in health facilities, research institutions or during immunization of human beings and

animals. It's classified into, infectious waste, sharps, pharmaceutical wastes, chemical waste and pathological waste. Biomedical wastes pose risks to human health due to its pathogenic characteristics and hence require prior treatment before disposal.

Currently, segregation is fully embraced in most dispensaries based on the guidelines issued by the Ministry of Health.

Currently, segregation is not fully embraced in most clinics based on the guidelines issued by the Ministry of Health. Although the biomedical waste is expected to be disposed through incineration, some find its way to the Kapenguria dumpsites and others find their way to Kapenguria Townships due to illegal dumping, while some is handled through rudimentary facilities such as kilns. Kapenguria county referral hospital have embraced proper biomedical waste management, the major challenge remains the small clinics which practice illegal disposal of these wastes. There is need for awareness on biomedical waste management within the municipality for safety in the Municipality.

(Management of biomedical waste should be guided by EMCA (1999), the Waste Management Regulations (2024), hazardous waste regulations, public health and occupational safety laws, the Health Act (2017), and national healthcare waste management guidelines)

2.2.5 E-waste:

E-waste is an emerging waste stream arising from Electrical and Electronic Equipment's (EEEs) becoming obsolete at the end of life. Municipality has experienced a rapid increase of e-waste due to adoption of ICT across all sectors and an influx of low quality EEEs. E-waste comprises heavy metal components and materials used in the manufacture of electronic goods. Some of these include

mercury, brominated flame retardants and cadmium which are considered hazardous if not well-handled during dismantling or recycling can become harmful to human health and the environment.

Batteries can either be alkaline (dry cells) or acid based which support domestic and industrial applications. The acid based (rechargeable and silver oxide) batteries contain heavy metals such as mercury and cadmium which are classified as hazardous substances. This hazardous material if not properly handled and disposed presents a risk to human health and the environment.

Currently, there are no recycling or disposal facilities for alkaline, rechargeable and silver oxide batteries. As such the batteries are disposed in the open dumpsites alongside domestic waste. Proper measures have to be put in place for E-waste management.

(Management of electrical and electronic waste should be guided by EMCA (1999), the Waste Management Regulations (2024), the Extended Producer Responsibility Regulations (2024), and occupational safety laws, as well as the Basel Convention on hazardous waste.)

2.2.6 Pesticides waste

Pesticides are chemicals used to control pests. Pesticide waste consists of expired and contaminated pesticides as well as the used containers. Due to their toxicity, potential to pollute and threat to human health, pesticide wastes are extremely hazardous and must be transported, treated and disposed of accordingly. These pesticides can contain persistent organic pollutants (POPs), which can accumulate in the food chain if not well managed. Larger scale generators of pesticides waste incinerate or export the waste to developed countries for treatment or disposal. However small-scale generators dispose pesticides wastes in their farms and

such things as containers end in dumpsite.

(Measures will be put in place for management of this waste. Handling and disposal of this waste should be in accordance with Pest Control Products Act (Cap. 346)(No pesticide waste can be handled or disposed of outside PCPB requirements.)

2.2.7 Used Oil and Sludge

Used Oil and Sludge arises from the use of petroleum products. This contains potentially hazardous compounds such as poly-aromatic hydrocarbons that have carcinogenic and mutagenic properties. Used oil and sludge have a slow rate of decomposition and hence any spillage can accumulate in the environment causing soil and water pollution. There is a need for management of this waste in the municipality.

2.2.8 Sewage Sludge

Sewage sludge is a sediment material that accumulates overtime in the sewage treatment plants and ponds. The widespread disposal of industrial effluent via sewage treatment works results in contamination of sewage sludge with hazardous chemicals, there by posing particular challenges for its disposal. Sewage sludge that is contaminated by heavy metals from industrial effluent can severely contaminated agricultural land to which it is applied. However, a high proportion of the contaminated sewage sludge continues to be disposed of in dumpsites. In this regard there is a need to pre-treat contaminated sewage sludge before disposal. Uncontaminated sewage sludge has a variety of commercial uses and can be recycled.

2.2.9 Industrial Waste

Industrial waste is the waste produced by industrial activity which includes any material that is rendered useless during a manufacturing process. Industries produce both hazardous and nonhazardous waste.

These wastes include chemical solvents, paints, sandpaper, paper products, industrial by products, metals, municipal solid waste and radio-active waste.

At the moment we have no industrial waste generated but measures are put in place to take care of the imminent opening of industries. Therefore, proper measures have to be put in place for management of this waste.

(Management of industrial waste should be guided by EMCA (1999), the Waste Management Regulations (2024), hazardous waste, water and air quality regulations, EIA regulations, occupational safety and public health laws.)

2.2.10 Asbestos waste

The municipality will shall put in place measures to manage this kind of waste as per Cap 346 the Asbestos handling and disposal guideline.

(Management of asbestos waste should be by EMCA (1999), the Waste Management Regulations (2024), hazardous waste regulations, occupational safety and public health laws, EIA regulations, and the Basel Convention)

2.3 Current Waste Management practices

Currently waste is stored at household level in individual's collection bins, collection is done daily by municipal cleaners in the municipality and there is no segregation of waste at all. Recovery of recyclable and reusable items is done by informal waste groups

Waste is transported using open modified tractor within Kapenguria town ,bendera and county government residence and disposed to Kapenguria dumpsite these poor transportation modes have led to littering, making waste an eye-sore particularly

plastics in the environment. Disposal of waste in the Municipality remains a major challenge because the Municipality has been using Kapenguria disposal site. Waste in Kapenguria Municipality is largely collected by the County Government vehicles. There are no Private Service Providers to offer services in the Municipality. Transportation is done daily pto Kapenguria Disposal site. Other market Centers in the municipality waste is collected and disposed in non designated points. Others practice illegal burning of wastes.

Currently municipality does not charge any fee on waste collection, transportation and disposal. However, going forward municipality will consider charging a fee on business premises, households ,institutions , factories, and other areas which will be clearly stated by this policy .This fee will cater for the cost of collection, transportation and disposal.The cost will be subjected to Public Participation. Community Participation in SWM is very low and this is shown by limited awareness and knowledge on the importance of a clean and healthy environment. As such, there is poor handling of waste at the household level including lack of segregation, reuse, reduce and recycling.

2.4 Challenges in Waste Management

• Lack of awareness and knowledge

There is limited awareness and knowledge on the importance of a clean and healthy environment. This has led to poor practices by the Public towards waste management which has led to environmental pollution. As such there is poor handling of waste at the household level including lack of segregation, reuse, reduce and recycling. In addition, negative attitude towards waste management and failure to take individual responsibility has contributed to poor practices such as littering, illegal dumping and open burning.

- **Poorly managed disposal site**

The municipality is expected to properly fenced the disposal site and provide security officer as it awaits for future relocation of the site.

- **Low Funding for waste management services,**

Funds to purchase equipment's, inappropriate waste transportation vehicles, lack of enough waste collection receptacles

Lack of prioritization for waste management in the Municipality has led to inadequate budgetary allocation. As a result, management of the entire waste management cycle (collection, transportation and disposal) is hampered. Low funding has also affected investment in waste management facilities and equipment.

- **Inadequate segregations**

There is lack of waste segregation at source leading to mixed wastes which are collectively disposed of in the dumpsites. Where sorting is done, the problem is compounded by the lack of compartmentalized vehicles for transportation of the sorted waste leading to the remixing. This hampers material recovery, reuse, and recycling. The sorting has largely been relegated to the lowly in society such as the waste pickers and street urchins.

- **Limited technical competencies**

As a Municipality, we are faced by limited technical competencies in waste management. This has led to poor management of our waste management facilities and equipment and their failure to attain optimal operating capacities.

- Lack of integration of modern technologies and tracking system in waste transportation vehicles and collection receptacles

Although there are many waste management technologies in the country, there has been

low adoption of the same by the relevant practitioners. This as a result of diverse factors including inadequate financial resource

- **Untimely and irregular waste collections**

There is untimely collection of waste in the municipality and there are limited transportation vehicles for proper waste management and fuel.

- **No waste management Infrastructure-Material recovery facility, composting site.**

Currently the municipality has no Material Recovery Facility a plan is needed to set up the infrastructural facilities in the municipality.

- **Low upcycling of waste materials (creativity)**

There is low upcycling of the waste materials and hence There is need for room for research and involvement of learning institutions facilities to do more creativity and research on waste management

- **Inadequate data for solid waste management in municipality**

There is no or limited data for waste management in the municipality and hence the need for municipality to conduct more research and collect more data on waste management systems.

- **Improper Waste management plan(zonation)**

Waste management plan is key and currently there is poor zonation in the municipality. and therefore, there is room for the improvement and better zoning to ensure effective waste management.

- **Illegal disposal of waste**

There is illegal disposal of waste in the municipality, and this is mainly because of limited knowledge and awareness and

thus give room for public information and awareness on waste disposal for proper waste management.

- **Open burning of waste**

There is open burning of waste in the Municipality which can be managed by the proposed awareness creation within the municipality.

CHAPTER 3: LEGAL AND INSTITUTIONAL FRAMEWORK

3.1 Introduction

The policy and legislative framework for county solid waste management consist of the constitution of Kenya and various statutes, sessional papers and sectoral plans among others. This part highlights the laws and policies that relate to solid waste management at county level.

3.2 Global Policy Related to Solid Waste Management

The global policy related to solid waste management is mainly contained in the United Nations conventions and policies that provide a framework for solid waste management and which have implications on county solid waste management policies and laws. They include – United Nations Convention on Climate Change. Article 4 on commitments provides for promotion and cooperation in development, application and diffusion including transfer of technologies, practices and processes that control, reduce or prevent anthropogenic emissions of greenhouse gasses in sector such as waste management sectors

The Kyoto Protocol to the United Nations Convention on Climate Change. Article I (viii) provides for States' obligation to limitation or and reduction of methane emissions through recovery and use of waste management. The Protocol obligates States to formulate and implement solid waste management programs that are intended to mitigate climate change. The Basel convention on the Control of Transboundary Movement of Hazardous Wastes and their Disposals. However, the control of international movement of hazardous waste is a mandate of national government

The Rio Declaration on Environment and Development (Agenda 21-Global Program of Action on Sustainable Development). Chapter 7 provides for sustainable human settlements which includes provision of basic services such as waste collection, Chapter 20 provides for managing hazardous wastes and Chapter 22 provides for managing solid wastes and sewage which encourages waste minimization and increase reuse and recycling. In addition, the United Nations' Sustainable Development Goals (SDGs) establishes a global framework and commitment for sustainable development. Specifically, key SDGs that have direct implications on solid waste management and which shall be integrated in the county model policy shall include –

Goal 3: Ensure healthy lives and promote wellbeing for all at all ages

Goal 6: Ensure availability and sustainable management of water and sanitation for all

Goal 9: Build resilient infrastructure, promote inclusive and sustainable industrialization and foster innovation

Goal 11: Make cities and human settlements inclusive, safe, resilient and sustainable

Goal 12: Ensure sustainable consumption and production patterns

3.3 National Policies and Acts Related to Waste Management

Constitution of Kenya

Article 10 entrenches sustainable development as one of the national values. Solid waste management is one of the key drivers of sustainable development.

Article 43 guarantees the right to the highest attainable standard of health, reasonable standards of sanitation and clean and safe

water. Solid waste is a major contributor to prevalence of risk factors to communicable and non-communicable diseases and conditions. Consequently, effective, efficient and sustainable management of solid waste especially in urban areas will drastically reduce incidences of communicable or non-communicable diseases and conditions and related health care burden as well as reduce associated public nuisance of unmanaged solid waste.

Article 69 of the Constitution provides for encouragement of public participation in the management, protection and conservation of the environment; establishment of systems of environmental impact assessment, environmental audit and monitoring of the environment; elimination of processes and activities that are likely to endanger the environment.

Section 2 (g) of the Fourth Schedule assigns to the county government the function of refuse removal, refuse dumps and solid waste disposal.

The Environmental Management and Co-ordination Act (Cap387)

The Environmental Management and Co-ordination Act, Cap 387 including subsidiary legislation is the main national statute that governs environment protection, conservation and management, which includes solid waste management. In regard to solid waste management, the Act provides among others for—development of county environment action plans which provide for environment management systems the standards of waste including issues such as handling, storage, transportation, segregation and destruction of any waste prohibition of handling dangerous waste classification and management of hazardous and toxic waste The Environmental Management and Coordination (Waste Management)

Regulations, 2006, and Environmental (Prevention of Pollution in Coastal Zone and Other Segments of the Environment) Regulations, 2003 seek to implement the statutory requirements on solid waste management.

National Environment Policy, 2013

The policy provides a governance framework for environment management. In regard to solid waste management, the policy recognizes inefficient production processes, low durability of goods and unsustainable consumption and production patterns lead to excessive waste generation. In order to address these challenges, the policy provides for development of an integrated national waste management strategy, promotion of use of economic incentives to manage waste and promotion of establishment of facilities and incentives for cleaner production waste recovery, recycling and reuse

The Kenya Vision 2030

The Kenya Vision 2030 lays the foundation for social and economic development in Kenya. In regard to solid waste management, Kenya Vision 2030 provides for development of solid waste management systems in at least 5 municipalities, and in the proposed economic zones, regulation on use of plastic bags, development and enforcement of mechanisms targeting pollution and solid waste management regulations, strengthening of institutional capacities of multi-sectoral planning and strengthening linkages between institutions of planning and environment management, development of national waste management system and use of market-based environment instruments for providing incentives or disincentives in solid waste management and establishment of initiative to clean the Nairobi River as well as rivers and waterfronts in Kisumu, Mombasa and Nakuru.

The National Solid Waste Management

Strategy, 2015

The National Solid Waste Management Strategy, 2015 is anchored on the Kenya Vision 2030. It lays the foundation for strategic management of solid waste in Kenya. The strategy provides for among others for–

- definitions and classification of solid waste
- the national context and status on solid waste management
- the common waste management practices in Kenya
- the challenges facing solid waste management in Kenya
- integrated solid waste management
- the waste management cycle and ideal approaches applicable to Kenya

The national strategy sets the foundation for development and adoption of county solid waste management policies and strategies.

Public Finance Management Act, Cap 412 C,

Which provides for financial planning and management at the national and County levels including linkage of development planning, budgeting and public expenditure

Urban Areas and Cities Act, Cap 275,

Which provides for integrated development planning in urban areas. The Act provides for development of urban integrated development plans for urban areas and cities which includes planning for solid waste management

Physical and Land Use Planning Act, of 2019,

Which provides for physical planning and development control in Kenya, which is mainly a county function. Integrated Solid Waste Management System requires functioning and effective spatial planning, zoning and land laws.

Legal Notice No. 137 on Transfer of Functions to County Governments, 2013,

Which provides for unbundling of county functions stipulated under Part 2 of the Fourth Schedule to the Constitution

Public -private partnerships Act Of 2021 (cap.430)

The principal national legislation governing design ,implementation and oversight of PPP projects in kenya.

The policy aligns municipal practice with the national PPP framework by ensuring contracting arrangements for solid waste services conform to the principles of value for money, affordability, accountability and sustanaibility as stipulated under the PPP Act.

3.4 County Policies and Act related to solid waste management

County Governments Act, No. 17 of 2012,

Which provides for the governance and management system and process in the county including development planning, decentralisation, citizen participation and policy development among others.

Public Finance Management Act, Cap 412 C,

Which provides for financial planning and management at the national and county levels, including linkage of development planning, budgeting and public expenditure.

CHAPTER 4: POLICY INTERVENTIONS

4.0 Introduction

The municipality shall adopt an integrated approach to solid waste management as well as the principles of solid waste management that form the foundation of this policy.

The policy measures shall be informed of policy statements which prescribe appropriate policy instrument in solid waste management. In addition, the policy measures are based on constitutional functional assignment of county governments as well as constitutional provisions

4.1 Policy Interventions

The overall aim for solid waste management is protection of human health and the environment in a manner that is affordable, environmentally friendly and socially acceptable. To achieve this there is a need for the Municipality to adopt the following interventions measures:

4.1.1 To adopt the Integrated Solid Waste Management Hierarchy

This is a Hierarchy uses various approaches of sustainable waste management. It establishes the preferred of solid waste management alternatives as follows: waste prevention, reduction, reuse, recycling, resource recovery, incineration, and land filling with prevention as the most preferred method in in the hierarchy.

To promote waste management through Adoption of Integrated Solid Waste Management Hierarchy.

The Kapenguria Municipal Board shall: -

- Liaise with the County Government to align County waste management laws and strategies to the waste management hierarchy.

- Prioritize waste prevention and minimization in conformance to the waste hierarchy when developing waste management plans and legislation.
- Liaise with the County Government to set aside sufficient land for waste management activities, and generate jobs and livelihoods from waste collection, recycling, and waste management activities according to the waste hierarchy
- Establish and improve waste management infrastructure to promote source segregation, collection, reuse, set up materials recovery facilities and controlled disposal in sanitary landfill.
- In consultation with the County Government, identify and prioritize potential and financial requirements of setting up composting plants and technology in the Municipality.
- Establish clear procedures for providing incentives to encourage private sector participation in composting ventures
- Ensure the recycles, bio-waste processors and material recovery facilities shall obtain environmental compliance licenses from NEMA.
- Promote the establishment of incineration (waste-to-energy programs)

4.1.2 Minimize Solid waste generation

In order to promote and facilitate prevention of solid waste generation through sustainable waste generation processes, Kapenguria Municipal Board shall –

- Promote prevention of waste generation among product users through awareness creation on behavior change, consumer choices and consumption practices to reduce excessive consumption or use and waste of diverse products
- Collaborate and coordinate with national

government and other stakeholders in adopting measures for promoting resource conservation and management to prevent or avoid excessive utilization of resources which lead to excess generation of solid waste

- Establish partnership and collaboration with manufacturers wholesalers and retailers in adopting appropriate measures and strategies for preventing waste generation
- Engage with national government to adopt appropriate measures for preventing waste in the product value chain and life-cycle such as product and packaging design, manufacture, distribution and product use
- Promote collaboration with national government and relevant stakeholders in the adoption of modern technology in product manufacture so as to reduce excessive generation of solid waste.
- In collaboration with other relevant public and private stakeholders, promote reuse of products or materials e.g. containers or packaging materials in order to reduce generation of waste.
- Establish an inventory for all the waste streams, update any data which shall be aggregated according to the respective sources and characteristics.

4.1.3. Promote Effective Solid waste handling, separation, storage.

In order to ensure effective and appropriate solid waste handling, storage and separation, Kapenguria Municipal Board shall–

- Collaborate with relevant stakeholders to carry out awareness creation and capacity development to waste generators on handling, storage and processing of solid waste at source.
- Ensure that solid waste is segregated or separated at source or point of generation into dry (recyclables) and wet waste (food waste and organic matter) which

shall be further segregated and stored under each of the two categories into different forms of waste in accordance with the standards and stored in appropriate receptacles in accordance with the prescribed guidelines and standards. (Source NEMA)

- In accordance with the building code and development control laws and policies (Quote the law) , owners or occupiers of residential, commercial or industrial premises shall install appropriate containers and spaces for waste handling and storage within the premises for purposes of ease of collection and which meet public and environment health standards for purposes of ease of collection. (Appendix containers)
- Ensure solid waste generated from any premises or source is separated and stored within the premises before being collected and transported for recovery and final disposal.
- Ensure waste is disposed only in designated points.

4.1.4 Promote Effective Solid waste collection

In order to address challenges associated with waste collection, Kapenguria Municipal Board shall:

- Collaborate with other relevant public and private actors to establish an efficient, responsive and coordinated municipality solid waste collection services system which shall among others include stakeholder consultation, mobilization and participation, compliance with public and environment health standards and collection of solid waste from public and private places and maintenance of clean public streets and places.
- In consultation with the National Environment Management Authority and other relevant stakeholders designate, gazette and develop waste collection

points in each location according to the solid waste management spatial map.

- In consultation with relevant stakeholders, install appropriate waste receptacles in strategic public places for the purpose of collection of solid waste.
- Ensure solid waste collection services provided by public or private actors comply with the prescribed standards and operating procedures.
- Ensure solid waste collection services from households, commercial, institutional or factory premises shall be carried out by private sector service providers in accordance with prescribed standards and guidelines unless in areas where there are no established private sector service providers for solid waste collection.
- Establish a system for collecting solid waste in informal settlements which do not have access to private sector provision of waste collection services.
- Establish a system of registration of solid waste collectors including waste pickers for the purposes of coordinating solid waste collection, facilitating stakeholder capacity development and ensuring compliance with prescribed guidelines and standards.
- In consultation and collaboration with National Environment Management Authority and other relevant stakeholder designate, gazette and develop waste transfer stations according to the solid waste management spatial map and prescribed standards. The Board may establish or facilitate establishment of specialized transfer stations for specific types of solid waste.
- In collaboration with the department responsible for public health, maintain waste collection points in conformity with prescribed public and environment health standards.
- In collaboration with the department (s)

responsible for women, youth, persons with disabilities or other vulnerable groups and County Treasury develop initiatives for the groups to participate in co-management of waste collection points and waste collection services for purposes of promoting economic empowerment of the groups.

- Initiate and develop public private partnership programmed (PPP).
- Ensure that the green procurement principle is adhered to for sustainability.
- In accordance with Access to Government Procurement Opportunities Policy, provide preferential treatment to youth, women and persons with disabilities in accessing thirty percent of municipal contracts for solid waste collection services.

4.1.5 Promote Efficient Solid waste transfer and transportation

In order to address challenges associated with solid waste transfer, Kapenguria Municipal Board shall:

- Ensure all solid waste transporters are registered and issued with a permit by the municipality as may be prescribed.
- Ensure solid waste transportation services including plant and equipment conform to the prescribed standards
- In collaboration with other public and private stakeholders establish market linkages between waste transporters and women, youth, persons with disabilities or other vulnerable groups involved in co-management of waste collection and for purposes of economic empowerment of the groups and effective service delivery.
- Ensure solid waste transfer and transportation services from households, commercial, institutional or industrial premises shall be carried out by private sector service providers or community-based organization accordance with prescribed standards and guidelines.

- Establish a system for transfer and transportation solid waste in informal settlements which do not have access to private sector provision of waste collection services.
- In collaboration with the departments responsible for physical planning and transport and National Environment Management Authority and in consultation with solid waste transportation service providers, designate specific routes and time schedule to be followed in transfer and transportation of solid waste
- Ensure the transfer and transportation solid waste done during off peak hours

4.1.6 Promote Solid waste processing and transformation

In order to address the challenges associated with waste processing and transformation, Kapenguria Municipal Board shall:

- In collaboration with other relevant stakeholders mobilize local communities and neighborhoods to promote and facilitate waste processing and transformation technologies
- In collaboration with other relevant stakeholders mobilize individuals, local communities, industries and neighborhoods to promote and facilitate donation or sale of used products that may be reused by other users.
- Promote private sector participation in solid waste processing and transformation through fiscal incentives, disincentives or fees to induce or promote enterprises involved in waste processing and transformation
- Promote green procurement while purchasing goods and services for the municipality

4.1.7 Promote Efficient Disposal of Residual Waste

In order to address challenges associated to waste disposal, Kapenguria Municipal Board

shall;

- Ensure all waste designated for disposal shall be disposed in accordance with the national policy and standards
- Ensure biomedical waste, hazardous and e-waste shall be disposed in accordance with the national policy and standard
- In collaboration with the physical planning department, National Environment Management Authority, residents in the potential areas for siting landfills and other relevant stakeholders, designate, gazette and develop sanitary landfills in accordance with the solid waste spatial plan and the county spatial plan
- Ensure all open public places where solid waste is dumped is decommissioned.
- Ensure open burning of solid waste is prohibited
- Ensure solid waste treatment is done before final disposal
- Develop a system and standard operating procedures for management of sanitary landfills
- Implement and where applicable, enforce national law and policy that prohibits disposal of solid waste into the environment.
- Collaborate with other partners in establishing sanitary landfills.

4.1.8 Enhance Solid Waste Management Financing

In order to address the policy challenges in financing solid waste management, Kapenguria Municipal Board shall:

- Levy user fees and charges in accordance with the tariff policy stipulated under the Finance Act of the County Government for solid waste management.
- In consultation with the national government adopt a public-private partnership model of financing various processes in solid waste management. Such partnership shall be based on efficiency, cost effectiveness and

sustainability of the model in provision of solid waste management services.

- Facilitate its officers to acquire technical skills and develop competencies for public private partnerships management especially in initiation, development, negotiation, award and management of public private partnerships in solid waste management.
- Subsidize solid waste management services to low-income areas and informal settlements in accordance with the relevant law
- Mobilize resources in the form of grants and donations from development partners for financing solid waste management processes.
- Waste management charges to be paid by clients to Private service providers.

4.1.9 Promote Participation of Informal Private Sector on Waste Management.

In order to promote participation of private sector in solid waste management, the Kapenguria Municipal Board shall:

- Initiate capacity development programs for informal sector engaged in solid waste management;
- Collaborate with relevant stakeholders to facilitate and promote market linkage between the informal sector and investors in solid waste management
- Where appropriate develop service agency agreements with the informal sector in the provision of solid waste management services.

4.1.10 Establish Waste Management Spatial Plan and Land Use Plan

The quantities of various waste streams generated depends on the population density of waste generators in a given locality. Different zones produce different types of waste and in various quantities. The location of waste collection points, application of

waste collection, transfer and transportation services are based on spatial planning in a given locality.

Further, the siting of waste disposal areas is based on physical characteristics of the locality such as soil structure, terrain, population density and impact of the locality to other physical resources such as water resources. Consequently, land use planning has a significant role to play in ensuring sustainable solid waste management. The municipality has no solid waste management spatial plan to, which guides various interventions in solid waste management services.

In order to ensure that there is sustainable solid waste management, it will be essential to have appropriate and effective zoning for solid waste management. In this regard, the Kapenguria Municipal Board shall:

- In collaboration with the physical planning department, carry out solid waste management survey using Geographical Information System (GIS), which shall consider Land use: topography, drainage and soil
- Infrastructure (transport, communications, health, education, water and energy)
- Economic base of the area (urban informal economic base)
- Human settlements (density and land use)
- Institutions such as schools and other government institutions, industries and commercial enterprises and non –state organizations
- Develop the municipal solid waste management spatial plan which shall include details for each location and sub location as the core decentralized spatial units.
- Designate the location of the collection points, transfer stations, composting sites, waste recovery facility and landfills

in accordance with the solid waste management spatial plan

- Regulate solid waste management in accordance with the solid waste management spatial plan
- In collaboration with the physical planning department designate zones for purposes of ensuring efficiency in service delivery and coordination of stakeholders responsible for spatial planning and county administration to map the Municipality.
- Ensure that the county spatial plan designates zoning and setting up of industries that are integrated in terms of use of waste generated.

4.1.11 Promote Planning, Partnerships, Participation and Inter-governmental Relations

Solid waste management is complex due to multiplicity of social, economic and environmental determinant factors and stakeholders. There is no single policy measure or stakeholder that can manage solid waste effectively. There is a need for inclusive of diverse stakeholders in solid waste management processes. Users and providers of solid waste management services must partner and collaborate in order to deal with all aspects of solid waste management. All the stakeholders should be involved in identifying policy options and implementing programmed related to solid waste management. Users and non-state providers of solid waste management services are usually excluded from active participation in the management process.

In order to ensure inclusion and participation of users and providers of solid waste management services, Kapenguria Municipal Board shall:

- In collaboration with relevant stakeholders, prepare a municipal solid waste management plan which shall

provide a framework for implementing this policy, national policy and any law enacted for purposes of implementing this policy.

- In collaboration with relevant stakeholders –
- initiate programmes for mobilizing and creating awareness among residents, local communities and neighborhoods to participate in sustainable solid waste management.
- establish mechanisms to receive and handle complaints related to solid waste management service delivery from the respective localities
- facilitate community or area-based forums for users and providers of solid waste management services to deliberate on emerging issues in solid waste management so as to enhance efficiency in service delivery promote and facilitate stakeholder-led initiatives on solid waste management,
- Consult, inform and coordinate with relevant stakeholders. The municipality shall liaise, consult, collaborate and coordinate with the national government and neighboring counties on matters related to solid waste management

4.1.12 Promote Information, Education and Communication

Solid waste management depends on a combination of regulatory, service delivery and information-based tools. Whereas regulatory tools are instrumental command and control instruments in behavior in matters such as generation, handling and disposal of solid waste, they cannot be fully effective unless they are complemented by behavior change by users and providers of solid waste management services. Sustainable solid waste management depends on a value-based approach by individuals and entities.

Strategic communication and messaging on

solid waste management is instrumental in shaping public opinion and support. The Municipality lacks effective information, education and communication systems and processes. There is low awareness on sustainable solid waste management in the municipality.

In order to increase awareness and change behavior on solid waste management, the following policy measures shall be adopted–

- In collaboration with relevant stakeholders develop and implement information, education and communication system and strategies targeting diverse users and providers of solid waste management services and shall ensure that such information is available to all stakeholders and county residents
- In collaboration with national government ministry responsible for education and relevant stakeholders develop information, education and communication materials and initiate dissemination, education and awareness creation programs targeting children and youth on solid waste management
- In collaboration with the department responsible for information technology develop technology-based communication strategies on solid waste management
- In collaboration with the department responsible for information technology management system (IoT) and relevant stakeholders establish a solid waste information management system

innovation in intervention measures and strategies in solid waste management. In addition, there is a need for evidence-based decision making on solid waste management. There are no research efforts undertaken by the municipality in regard to solid waste management.

In order to address the policy gaps in research and development, the following policy measures shall be adopted–

- Facilitate a capacity development programmed for personnel in research and development Establish a research unit to coordinate, promote and undertake research and development related to environment management and governance
- Undertake and collaborate with other relevant research institutions and institutes of higher learning in carrying out research and development in solid waste management
- In collaboration with relevant stakeholders disseminate research findings
- Establish a research data management system
- Ensure that evidence generated through research informs decisions related to solid waste management.

4.1.13 Promote Research and Development

Solid waste generation is dynamic and changes as society develops. The form of waste streams changes as production processes changes and new products and packaging emerges. Consequently, there is a need for continuous

CHAPTER 5: POLICY IMPLEMENTATION FRAMEWORK

5.0 Institutional Framework

This chapter outlines the mechanisms for implementing, monitoring and evaluating the policy. For intended policy outcomes to be achieved, there is a need for effective policy implementation, monitoring and evaluation. This will require strong institutional development, inclusion of stakeholders in governance, legal and administrative reforms and integration with the county performance management system.

In order to ensure effective and efficient solid waste management, the following institutions shall be formed;

5.0.1. Establish Kapenguria Solid Waste Management Committee

Kapenguria Municipality shall establish a solid waste management Committee which shall consist of;

- i. Board member in-charge of environment -Chair
- ii. the Municipal manager who shall be the Secretary;
- iii. the officer in charge of environment in the municipality;
- iv. Assistant County Commissioner
- v. the officer in charge of public health matters in charge of Kapenguria Municipality
- vi. representative - (KNCCI) who is resident of the municipality
- vii. representative for CSOs dealing with waste management
- viii. representative of waste pickers
- ix. Representatives of the resident neighborhood associations within Kapenguria Municipality

The committee shall be responsible for –

- coordinating public and private sector provision of solid waste management services in the municipality
- providing a platform for public-private dialogue, consultation, collaboration and participation in solid waste management in the municipality
- facilitating of Municipal residents to manage solid waste
- ensuring harmonization of public and private sector strategies and programs on solid waste management in the municipality
- monitoring the implementation of this policy and other solid waste management policies, strategies, plans and programs at the municipality level
- monitoring the quality and adequacy of provision and delivery of solid waste management services in the municipality
- organizing and facilitating town forums on solid waste management;
- advising the Municipality Board on appropriate legislative and policy measures on public services to be adopted in ensuring effective implementation of this policy and any legislation developed for implementation of this policy

The Committee shall hold meetings on a quarterly basis and when need arises and shall regulate its own procedure. The term of office for persons who are not public officers shall be 3 years renewal should be based on attendance

5.1 Planning and Performance Management

Implementation of the policy shall be undertaken through development of municipal plan. In accordance with the County Governments Act, the municipal plan shall be part of the County Integrated Development Plan (CIDP 2022-2027). The county Medium Term Expenditure Framework (MTEF) and the County Fiscal Strategy Paper shall adequately cover the strategies and program provided under the municipal plan. The municipal plan shall be implemented annually through the annual development plan

Implementation of this policy shall be integrated with the County and Kapenguria municipality performance management system through the municipal plan. The annual performance contracting and targets for the municipality responsible for implementation of this policy shall be aligned to activities and programs in the municipal plan so as to ensure complementary and inter-sector approach in implementing this policy. Data related to policy implementation shall be collected on a continuous basis in order to inform decision making by the municipal manager and other stakeholders.

5.2. Legal and Administrative Reforms

In addition to programs and projects to be designed under the municipal plan, appropriate legal reforms related to solid waste management shall be undertaken. They shall be prepared for enactment or adoption laws, guidelines, standards and frameworks. Key among them shall be enactment of Kapenguria Municipality Solid Waste Management Bill and Kapenguria Municipality by-laws.

5.3 Collaboration with National and County Governments

As stipulated under Article 6 and 189 of the

Constitution, the county government shall institute measures to cooperate, collaborate, consult and partner with the national government in implementing this policy as well as implementing national policies, laws and standards related to waste management. In this regard, the department responsible for waste management shall initiate intergovernmental collaboration mechanisms with the national government ministry of environment and other agencies responsible for matters related to environment.

5.4 Staff Capacity Development

The department responsible for waste management shall in collaboration with the department responsible for human resource management and the County Public Service Board department as well as other county departments responsible for implementing this policy, hire qualified professional staff in line with respective policy measures. In addition, the department responsible for waste management and the department responsible for human resource management shall develop and facilitate continuous professional and capacity development for all relevant officers in various departments responsible for implementing this policy

5.5. Stakeholders' Involvement

Successful implementation of this strategy requires the involvement of several actors whose roles are outlined below;

NEMA

Roles

- Develop and disseminate public information on the regulatory requirements for waste management in Kenya;
- Enhance the capacity of the county government and municipalities on zero waste management systems and approaches applicable in the county.
- Hold public awareness sessions (for

example, school workshops, public consultation exhibitions and public events) on solid waste management initiatives;

- Support the dissemination of waste management research and development findings
- Involve mass media dissemination techniques, such as the publication of news articles and press releases, in addition to ensure coverage in both print and media outlets.
- Undertake enforcement activities of the laws developed on solid waste management and surveillance exercises on illegal waste related activities. Monitoring and evaluation of the strategy

ENVIRONMENT DEPARTMENT

Roles

- Responsible for drawing up action plans for implementation of applicable solid waste management systems;
- Source adequate funding for development of sustainable waste management initiatives in the entire cycle;
- Put in place measures for enticed Public-Private-partnerships (PHP);
- Bench-marking best practices of appropriate technologies;
- Undertake periodic clean-up activities.
- Provision of equipment for waste segregation and transport systems;
- Zone the waste operational areas;
- Continuous management of activities/facilities to ensure all the waste is transported to the designated waste disposal sites in a timely manner
- Monitoring and evaluation of the strategy.
- Ensure wide coverage and no littering of waste through improved collection methods and facilities.
- Progressively improve the designated official county disposal site towards a sanitary landfill

LEGAL DEPARTMENT

Roles

- Advise the Kapenguria municipality board on Policy formulation, review and implementation and Interpretation of legislations

TRADE DEPARTMENT

Roles

- Provide opportunities to accelerate the diffusion of waste processing technology and create loops in the manufacturing process to keep resources in the production line.

AGRICULTURE

Roles

Civil Society Organizations (CSOs) and NGOs in the municipality on waste management

Roles

- Promote and /or undertake income generating ventures in waste management initiatives;
- Represent the public's interest in the solid waste management agenda, nationwide and in support in identification of illegal waste related activities.
- Advocate for change in the public's knowledge, attitude and practice towards sustainable waste management.

PRIVATE SECTOR

Roles

- Through PPP, Involvement in the development of effective and efficient solid waste management facilities;
- Prioritize on corporate social responsibility (CSR) on waste management
- Empower communities and other stakeholders in understanding waste management related issues and in finding solutions for the same

THE CITIZENS/PUBLIC

Roles

- Change attitude and practice to embrace the concept of a waste generator's responsibility by ensuring waste is appropriately managed at source and/or in all phases of the waste management cycle;

CM COMMITTEE

Roles

- Participate in creating awareness on Solid Waste Management in the Municipality and Follow up on Policy Implementation

PUBLIC HEALTH.

Roles

- Prevent spread of diseases
- Awareness creation
- Enforcement
- Reduce risks of contamination and pollution
- Ensure proper waste management practices are adhered to
- Ensure waste are collected and disposed of properly.

CHAPTER 6: MONITORING AND EVALUATION

6.0 Policy Monitoring and Evaluation

6.1 Introduction

This chapter outlines how the policy will be monitored and evaluated during its implementation. The chapter highlights the proposed M&E structure; data collection, analysis, reporting, and learning, M&E outcome indicators, and dissemination and feedback mechanism. The County M&E Directorate will provide strategic guidance and tools in tracking the implementation of the policy to ensure it achieves the intended purpose.

6.2 Design of Indicators

In order to ensure effective implementation of this policy, there shall be a continuous monitoring of the results of programs and activities undertaken to implement this policy. The department responsible for waste management shall in collaboration with national and county stakeholders design the core outcome indicators to be adopted in measuring the results

6.3 Methods and tools for data collection

The M&E Directorate, in collaboration with key stakeholders, will define and develop the methods and data collections tools that will be used to collect, collate, analyze and report arrangements in line with the National M&E Norms and Standards. The tools will include questionnaires, structured, semi-structured and unstructured interviews, focus group discussions, photography, videography, and observation, among others.

6.4 Monitoring of the policy

Monitoring of the policy will be done

continuously at all level of implementation to ensure its strategies and objectives are achieved. The measure of the performance in relation to the target will be analyzed.

6.5 Evaluation plan

Evaluation will be critical for the municipality policies to determine the relevance and fulfilment of objectives, development efficiency, effectiveness, impact, and sustainability. It will be done at the mid of the intervention and at the end before the review of the policy document. The evaluations will include rapid evaluations, impact evaluations of the policy. The M&E Directorate will develop comprehensive evaluation plans for each planned evaluation to support the process. Evaluation will cover components such as purpose of the evaluation, evaluation questions, evaluation criteria, timetable, and work plan, collecting data for an evaluation, data collection methods to answer evaluation questions, data collection tools and activities, data analysis, and reporting evaluation findings.

6.6 Reporting and dissemination

Reporting of the policy interventions will be done at quarterly and annual basis as guided by the County M&E Policy. The reporting process will be collaborative and inclusive with key stakeholders and development partners to inform decision making.

The policy data, report and information will be made available to all stakeholders including government officials, academic researchers, policymakers, senior management, project participants, and the public for use in making evidence-based decisions. The County will develop a data dissemination plan that will define the target stakeholder or audience,

the information needs of the various stakeholders/audiences, the communication methods, and the timing/frequency of the dissemination.

6.7 Feedback Mechanism

Feedback-and-Response System will be developed to create a two-way communication

loop that will enable the County Municipalities receive citizens' feedback and respond timely to their suggestions and concerns. The Feedback mechanisms will allow the citizens to provide feedback through channels that include meetings, suggestion boxes, hotlines, and others.

ANNEX I: KAPENGURIA MUNICIPALITY SUSTAINABLE SOLID WASTE MANAGEMENT IMPLEMENTATION PLAN/MATRIX

	Lead	Expected results/Output	Performance Indicator	Respon- sible person	Timeframe	Estimate budget	Funding source
Policy objective 1: Promote awareness on solid waste management							
Conduct community sensitization on sustainable solid waste management	Municipality	-Increased community awareness on sustainable solid waste management	Number of sensitization meetings conducted	KMB	Continuously	5,000,000	CG Partners
Capacity building of KMB, Staff and stakeholders on solid waste management practices.	Municipality	-Improved efficiency and effectiveness in solid waste management practices in Kapenguria Municipality -Benchmarkings conducted -Workshops organized	<ul style="list-style-type: none"> Number of trainings conducted Number of benchmarkings attended Number of Workshops organized 	KMB	Quarterly	5,000,000	CG Partners
Policy Objective 2: Resource mobilization to develop a sustainable waste management system							
Map out key stakeholders to support solid waste management	Municipality	Stakeholders identified and mapped	Number of stakeholders identified and mapped	KMB	Continuously	1,000,000	CG Partners
Promote and encourage use of PPPs Models in solid waste management	Municipality	PPPs engaged	Number of PPPs engaged	KMB	Continuously	2,000,000	CG Partners
Strengthen collaborations with development partners	Municipality	Increased resources funding for waste management	Number of Mou Signed	KMB	Continuously	500,000	CG
Lobby for increased budgetary allocation on waste management	Municipality	Increased budgetary allocation	Percentage increase in budget allocation	CEC LANDS	Annually		CG
Identify and map out point of waste generation	Municipality	Data base of waste generators within the Municipality	Number of mapped out waste generators	KMB	2025-2026	5,000,000	CG Partners

Policy Objective 3: Establish environmentally sound infrastructure systems for waste collection, transportations and disposal						
Set up web-based solid waste management system	GIS and ICT	Waste management system operationalized	Number Of Established and working WEB – BASED solid waste management system	KMB	2026-2027	5,000,000 CG Partners
Procure 15 modern and standardized solid waste receptacles	Municipality	15 Procured standardized receptacles	Number of Procured standard collection receptacles	KMB	2026-2027	7,500,000 CG
Procure one standard modern truck		1-Procured standardized truck	Number of procured standard truck	KMB	2027-2028	20,000,000
Conduct a baseline study of the current non designated Kapenguria disposal site and prepare decommissioning plan -Conduct an EIA for the new proposed disposal site	Municipality	Baseline study conducted and decommissioning plan prepared. -EIA Conducted	Approved baseline study and decommissioning plan -Approved EIA study	KMB	2026-2027	2,000,000 CG
Policy Objective 4: Promote and establish waste segregation and recycling systems						
Establish material recovery facility	Municipality	Material recovery established	Number of established material recovery facility	KMB	2026-2027	20,000,000 CG Partners
Formation Of waste recycling groups	Municipality	Recycling groups formed		KMB	2026-2027	100,000 CG Partners
Develop promotion on use of recyclable materials	Municipality	-Civic education forums organized -published education Materials	-Number of civic education forums organized -number of Published education materials	KMB	Continuously	2,500,000 CG Partners
Enhance stakeholders' collaboration on waste segregation and recycling	Municipal environment officer	-Partners mobilized -stakeholder workshop organized	-Number of partners mobilized -Number of workshops organized	KMB	Continuously	1,000,000 CG Partners

Policy Objective 5; Encourage collaborations with research institutions and promote adoption of new technologies for sustainable waste management.						
Encourage collaborations with research institutions	Municipality	Mou signed	Number of Mou Signed	KMB	2029-2031	200,000 CG Partners
Identify locally led waste management technologies	Municipality	Map out waste handlers in line with new technologies	Number of Mapped out waste handlers using new technologies	KMB	Continuously	500,000 CG Partners
Policy Objective 6: Engage private Waste Collectors to manage Solid Waste						
Engage private waste collectors	Municipality	Private waste collectors engaged	Number of private waste collectors engaged	KMB	2028-2029	50,000 CG
Policy Objective 7: Formulate the appropriate legislations on waste management						
Develop Solid Waste management Act	Municipality	Solid waste management Act in place	Approved Solid Waste Management Act	KMB County Assembly	2026	3,000,000 CG Partners
Implementation of the Solid Waste Management Act	Municipality	Implemented Solid Waste Management Act	Quarterly reports Regulations developed	KMB	Continuously	2,000,000 CG Partners

ANNEX 2: DEFINITION OF TERMS

“Agricultural waste” is waste generated from animal rearing and the production or harvesting of crops or trees and include animal carcasses;

“authorized officer” means Municipal Manager, Municipal Environment Officer or any other officer authorized by the Kapenguria Municipal Board in writing the purposes of enforcements of the provisions of this Policy;

“biomedical waste” means any waste which is generated during the diagnosis, treatment or immunization of human beings or animals or in research activities pertaining thereto or in the production or testing of biological and includes categories of waste specified under the Environment Management and Coordination Act and its subsidiary legislations;

“composting” means the process biological decomposition of organic waste into humus;

“Extended producer responsibility;
The principle states that producers should be given significant responsibility financially and/or physically for the treatment or disposal of the waste from the products they create. Beyond easing government budgets for waste management, such responsibility in incentives companies to prevent wastes at the source, promoting more environmentally friendly product design and supporting the achievement of public recycling and materials management goal

“ Municipal Environment officers” means an officer appointed and designated in writing by the Municipal manager charged with the execution of this Policy;

“County Executive Committee Member” means the County Executive

Committee Member in charge of Lands, Housing and Physical Planning And Urban Development;

“construction and demolition waste” means waste generated from construction, renovation, excavation, repair and demolition of structures including buildings and roads;

“Department” means the county department responsible for waste management;

“electronic waste or e-waste” means any discarded electrical or electronic devices, components, parts or materials and includes computers, televisions, stereos, copiers, fax machines, telephones, electrical cables and wires and batteries;

“Pollution” means any direct or indirect alteration of the physical, thermal, chemical, biological or radio-active properties of any part of the environment by discharging, emitting or depositing wastes so as to effect any beneficial use adversely to cause a condition which is hazardous or potentially hazardous to public health, safety or welfare or to animals, birds, wildlife, fish or aquatic life, or to plants or to cause contravention of any condition, limitation or restriction which is subject to a license under this Act;

Unless otherwise stated, the premises in the context of this Act shall include but not limited to restaurants, hotels, bars and lodgings, schools, offices, mosque, churches, hospitals, parks, hostels, factories;

Supermarkets, petrol stations, and/or any other place frequented by members of the public;

“Polluter-Pays Principle” means that the cost of cleaning up any element of

the environment damaged by pollution, compensating victims of the pollution, cost of beneficial uses lost as a result of an Bill of pollution and other costs that are connected with or incidental to the foregoing, is to be paid or borne by the person convicted of pollution under this Act or any other applicable law (Cap. 387);

“Hazardous waste” Means any waste, which has been determined by the authority to be hazardous waste, or to belong to any other category of waste provided for by this Act and or the Environmental Management & Coordination Act (EMCA) 1999; amended 2015;

“Hazardous Substance” means any chemical, waste, gas, medicine, drug, plant, animal, microorganism or any other substance, which is likely to be injurious to human health or the environment;

“incineration” means the controlled combustion of organic substances contained in waste materials;

“industrial waste” means waste material produced or generated by industrial processes or activity;

“licensing officer” means an officer designated under section 71; **“occupier”** means a person in occupation or control of a premises and in relation of premises, different parts of which are occupied by different persons means the respective persons in occupation or control of each part;

“Premises” includes passages, buildings, lands and segments in every tenure and machinery, plants or vehicles used in connection with any trade carried on at any premise;

“Trade” means any business or undertaking

whether originally carried on at fixed premises or at varying places which may result in the discharge of substances and energy and includes any activity prescribed to be a trade, business or undertaking for the purpose of this Act;

“Industrial Undertaking” means any place or premises where there are commercial undertakings which are likely to have environmental impacts;

“public market” means market for wholesale or retail sale of household goods or products, food, agricultural products and clothing among others;

“recycling” means the process of transforming non- biodegradable waste into secondary resources or new products or as raw materials for producing other materials or new products which may be of similar or different composition or nature with the original products;

“re-use” means any operation by which a product or a component of a product that is not waste is used again for the same purpose for which it was conceived;

“Solid Waste Management” means the activities that are used in reducing, handling, segregation, treatment, storage, material recovery, transportation and disposal of solid waste so as to protect the environment against the possible adverse effects;

“solid waste” include any waste in solid form which is deposited in the environment in such volumes of composition likely to cause an alteration of that environment;

“Waste” includes any matter prescribed to be waste and any matter whether liquid, solid, gaseous or radioactive, which is discharged, emitted or deposited in the, environment in

such volume, composition or matter likely to cause an alteration of the environment;

“waste collection point” means any premises or any designated area where solid waste is deposited temporarily before being collected and transported to a transfer station or a waste disposal site;

“waste Collection Service” means any services that entail removal, transportation and proper disposal of waste;

“waste Generator” means any person whose activity or an activity under the person’s direction produces waste or if that person is not known, the person who is in control of that waste and includes a person incharge of an outdoor activity, function or event that is permanently or temporarily held in a public place where waste is generated;

“Wetland” means area of marsh, fen, peat lands or water, whether natural or artificial, permanent or temporary, with water that is static or flowing, fresh, brackish or salt including areas of marine waters the depth of

which at low tide does not exceed 6 meters; “transportation” means the transfer of waste from waste collection points to a waste transfer station or to any place for purposes of processing or disposal of waste;

“waste prevention” means measures taken before a substance, material or product has become waste, that reduce—

- (a) the quantity of waste, including through the re-use of products or the extension of the life span of products;
- (b) the adverse impacts of the generated waste on the environment and human health; or
- (c) the content of harmful substances in materials and products;

“waste recovery” means the process of reclaiming particular components or materials for producing other products through value addition, or using the waste as energy and involves a variety of mechanical or biological processes that remove a variety of materials or chemical components from the waste stream;

SOLID WASTE MANAGEMENT CHARGES

No.	Category	Charges	Small	Medium	Big
1	Single room	100			
2	One bedroom	150			
3	2 bedroom and above	300			
4	Hotels		1000	2000	4000
5	lodging		200	300	500
6	Mpesa	50			
7	Salons/Beauty shops		300	400	500
8	Kinyozi (barber shops)		100	150	300
9	Boutiques		200	250	300
10	Industries		1000	2000	3000
11	Supermarkets		1000	2000	3000
12	Club		1000	2000	3000
13	Miraa	500			
14	Bakery		100	150	200
16	pool		100	150	200
17	Butchery	100			
18	Corporates		500	1000	1500
19	Garages (Motorbikes)	500			
20	Spare parts dealers (Motorbikes)		1000	2000	3000
20	Garages(vehicles)	1000			
20	Jua kali	1000			
21	Timber yards		250	300	
22	Institutions	Kshs.325 per Kilometer			
23	Waste transporters	Kshs.1,000 per tonne			
24	Pharmacies		200	300	500
25	Shops (Kiosks, medium and big shops)		200	300	500
26	Food hawkers	100			
27	Fish mongers	200			
28	Hardware	500			
29	Welding shops	300			

ANNEX 3: WASTE MANAGEMENT GUIDELINES

PART I

Kapenguria municipality shall involve the private sector in Waste Management within the areas of jurisdiction.

PART II

The following policy guidelines shall be administered by the Kapenguria municipal board or any other authorized officer.

- Disposal of waste shall be done only in approved designated disposal sites or as may be directed by the municipality
- All waste producers, handlers, transporters, disposal agents in Kapenguria municipality shall when and where necessary facilitate separation, re-use and recycling of waste shall be directed by the Municipal environmental officer and any other authorized officer.
- All private operators in waste management shall be licensed in accordance with the stipulated licensing/permit regulations.
- All private operators shall appoint qualified managers as approved by the Kapenguria municipal board
- The Kapenguria municipality shall be the overall supervisory and regulatory authority in storage, handling, transportation, separation and disposal of all generated wastes within its jurisdiction.
- Every waste transfer, treatment or disposal site shall be subjected to an environmental impact assessment in accordance with the Environmental Management and Co-ordination Act, 1999 for Special Waste Collection (SWC).
- All hazardous waste shall under-go necessary pre-treatment by the producer or licensed Private Collector before transportation to designated disposal ground or transfer site.
- Any radio-active waste generated handling, transportation, storage or disposal shall be authorized and supervised by the Radiation Authority in the Ministry of Health in liaison with Kapenguria municipality and County Government of West Pokot.
- Clinical and pathological waste handling and transportation shall be done by specialized companies authorized by Kapenguria municipality and County Government of West Pokot and disposal shall be by incineration or by burying in designated and constructed underground pits approved by the County Government of West Pokot.
- All e-waste should be handled as per laid down regulations.

PART III

LICENCING POLICY AND QUIDELINES

- All companies, individual's enterprises or otherwise shall pay permit fee to the County Government of West Pokot in accordance with their classification and category as approved by the municipal Environmental officer.
- The contract shall be renewed every three years while permit is renewed yearly subject to performance and meeting other requirements prerequisite.
- The permit fee shall be subject to review from time to time.

Categorization of Waste Collectors

1) General Waste Collection (GWC)

To handle domestic, commercial, garden and non-hazardous agricultural waste

2) Specialized Waste Collectors (SWC)

To handle clinical

3) Toxic, hazardous-industrial.

Authorization & Licensing

In line with provisions of Section 33, 34, & 37 of the Environmental Management By Laws, written application shall be forwarded to the Municipal environmental officer for consideration and approval.

The application shall provide the following details;

- **Service provider – Name**
- **Copy of identification/registration**
- **Contacts – Telephone, Box number, Office location, email**

In addition to one acquiring an authorization letter from Municipal environmental officer, appropriate business permit from Municipal environmental officer

Storage

- Waste generator to provide adequate and approved waste receptacles.
- To store waste in approved designated areas accessible
- Bins and the waste storage room(s) should be spacious, well lit and with an impervious wall and floor that is easy to sanitize.
- All measures should be employed not to continue, pollute or be source of nuisance to neighborhoods and Environment.

Sanitization

- All tools, equipment's, PPE, stores and transport facilities should be cleaned and sanitized as per usage in order to render them free from dirt, germs and foul smell.
- Sanitary pads waste to dispose of other than through incineration, should be first sanitized in an appropriate method/procedure as prescribed by County Municipal environmental officer.
- Method/procedure, equipment's and sanitization materials will be spelt out by service provider and approved and supervised by County Municipal environmental officer or his representative.
- The process of sanitization should be designed and executed in a manner that will not be source of danger to personnel, neighborhood and Environments.

Disposal

- Sanitary pads waste will be disposed of through incineration in an approved licensed facility (Incinerator) or in an approved method and in a designated site.
- In applying for authorization to engage in the sanitary pads waste handling, the applicant shall spell out disposal method to be employed for consideration and approval.

Records/Reports

- All necessary records and documents required in provision of this service will be well/ correctly recorded and kept and always available for perusal by the County Municipal environmental officer or his/her representative and any other authorized Government Officer/authorized person.
 - a. Customer records
 - b. Service provision agreement(s)
 - c. Service provision time table and delivery documents.
 - d. Quantity of bin per customer and waste collected and dates.
 - e. Sanitization and or disposal records.
- Authorization/approval/permits documents/monthly reports to be submitted before 5th of subsequent month, the service provider will submit report of previous month to County Municipal environmental officer .The report should show the following;
 - a) Customers/Institutions served.
 - b) Quantity of waste collected, sanitized and or disposed.
 - c) Sanitization procedure used – including quantity and date.
 - d) Final disposal – records/proof.
 - e) Final disposal – records/proof.

GENERAL

- 1) In addition to the above guidelines the service provider must abide by all other laws, regulations and an appropriate practice incidental to sound waste handling, collection, transportation, storage and disposal.
- 2) The whole process of provision and servicing of sanitary bins will be maintained in hygienic and sound Environment practice.
- 3) The Kapenguria municipality board remains the sole supervisor and regulator of waste handling and treatment/disposal as per the relevant Acts, Rules and Regulations incidental to the service.
- 4) The breach of any of these guidelines, policy guidelines in Private Sector involvement in waste Management, relevant laws, by-laws and or instructions from the Municipal environmental officer will lead to revocation of authorization, permit and or may lead to legal action.
- 5) That these regulations are subject to review from time to time in view of improving the service, adhering to laid down regulations/laws.
- 6) The Kapenguria municipality or any of its officers are exonerated from any liability that may arise in course of operation – service provision.
- 7) The Kapenguria municipality will ensure compliance to these guidelines in order to ensure the service is carried out in a way that may not compromise health and or Environment sustainability.
- 8) Before authorization the service provider (individual, organization, firm or company) will sign a declaration form – stating having read and understood the guidelines/rules and that the individual or organization will follow the rules.

DECLARATION TO ABIDE TO GUIDELINES OF WASTE MANAGEMENT SERVICES.

Particulars

Name.....
Organization.....
Registration Certificate.....
ID card No.....
Address P.O Box.....
Town.....
Telephone/Mobile No.....
E-Mail address.....
Physical Address.....

Directors:Name	ID No.	Contacts
.....
.....
.....

Declaration

I/We.....

Declare that I/We have interest to engage in and or am/we are engaged in waste management Service Provision. I/We have read and have understood the content of the guidelines and pledge to abide to the guidelines, County supervision and direction in incidental to the service provision.

Signed

1. Name..... Sign.....

Position.....

2. Name..... Sign.....

Position.....

3. Name..... Sign.....

Position.....

Permits required

- Service provision permit
- county municipal waste disposal fee and tipping charges per trip
- refuse removal inspection fee per zone for firms/CBOs per month(GWC)

NOTE:All waste collectors shall register with umbrella organization (body of waste collector's firms) and attend a bi – annual meeting chaired by Municipal environmental officer.

PART IV REGULATIONS

- 1) The private waste operator shall be legally registered with the registrar of companies or any other relevant body. Evidence of registration will be availed by the operator who will supply a verified copy to municipal environmental officer.
- 2) Toxic and clinical wastes should be handled by specialized companies, which shall have qualified staff. The operator shall apply special ways and means in collecting, handling, transporting, pre- treating and disposing of the waste. Vehicles transporting such wastes shall be clearly marked "HAZADOUS WASTE"
- 3) All waste transportation vehicle shall be suitably covered to avoid spillage on the street during collection and transportation
- 4) The vehicles and equipment used by the operators for the purpose hereof shall have identification number allocated by the municipal environmental officer and same be clearly and conspicuously mounted on the body of the vehicles
- 5) All vehicles, tools, equipment and other related machinery used by the operators shall be inspected and approved by the municipal environmental officer before commencement of operations and there after periodically during operations
- 6) The operator should keep register indicating waste collected and areas covered including evidence of proper disposal of the same for inspection by the municipal environmental officer. In addition, the operator shall avail to Municipal environmental officer a comprehensive client inventory on monthly basis
- 7) Containers and waste handling facilities used shall have the company logo clearly and bodily inscribed
- 8) The vehicles and equipment's shall be maintained in clean state at all the times
- 9) i) All staff engaged in waste management services shall have appropriate protective gears while on duty
ii) The staff should have good conduct and good customer relations quality
- 10) The operator shall dispose of waste at designated sites only or at points approved the county municipal environmental officer
- 11) No waste shall be transported or disposed of on weekends and public holidays. Waste should be transported between 6-7 am on weekdays
- 12) The operator shall have an office at the zone of operation which shall be used among others things to receive payments and complaints which may emanate from the client served. The office shall be open from Monday to Saturdays
- 13) Every waste operator shall operate promptly (at most 48 hours) to complaints raised by their clients and / or members of the public and council
- 14) The county municipal environmental officer shall have the right and access to inspect the various contracts between operator and their clients
- 15) All operations in waste management shall be carried out under the guidance of the

municipal environmental officer

- 16) Each operator shall sign an agreement to adhere to all requirements, specification and standards as may be directed by the municipal environmental officer from time to time
- 17) Each operator shall obtain a permit (s) as required by law and all regulations
- 18) If the private operator is found to be in breach of any of these regulation(s), the municipal environmental officer shall cancel or suspend the operators permit or take any other action he may deem appropriate

PART V PERSONNEL

All personnel engage in waste collection shall be provided with adequate and appropriate personal protective gears that shall be well maintained and labeled. The protective gear shall be worn at all times during waste collection and transportation

- 1) The private waste collectors in liaison with the council shall ensure that all the personnel engaged in waste collection shall be well informed of all waste management issues and hazards associated with waste handling
- 2) PRIVATE waste operators shall engage waste collection managers/ supervisors who shall possess the following qualification or disciplines: -
 - Environmental related courses or Environmental Health Sciences
 - Waste management course or reasonable span of experience on waste management level of supervisor from a reputable organization and should be literate
- 3) All laws, rules and regulations pertaining to labour must be followed and adhered to before engagement of human labour and throughout course of operation

PART VI

VEHICLES, TOOLS AND EQUIPMENT

In addition to manufactures standard specification, the following shall apply: -

- 1) The vehicle / equipment shall be complete with all fittings and fully operational in every aspect with the requirements of the Traffic Act and any other law in order to run on public highways
- 2) Vehicles used for the transportation should have a tipping / ejection mechanism or any other mechanism acceptable to the county municipal environmental officer
- 3) Capacity recommended for refuse collection vehicles should be 3 tones, 7 tons and 8 and 10 tons

PART VII

COLLECTION MODE AND FREQUENCY

- 1) Garbage collection shall be at kerb or road reserve well poisoned by garbage producer for ease of collection
- 2) Garbage should be in suitable receptacles supplied by the private waste handler at a fee borne by waste generator
- 3) Where the waste to be collected cannot be placed in waste receptacles provided, the producer shall ensure the waste is well wrapped in any other suitable material such as carton which facilitate easy of collection
- 4) Collection and disposal of waste emanating from rearing of dairy animals, fowls and any other domestic animal shall be by private arrangement made by the producer and shall not be linked to domestic waste collection arrangement

- 5) Collection of waste from households shall be at least once; while from trade premises shall be at least twice a week
- 6) Waste collection time table shall be drawn and approved by the municipal environmental officer before commencement of the services and the same shall be made available to the clients served by the municipal environmental officer
- 7) In the event that the time table (of collection) cannot be adhered to for unforeseen circumstances the operator shall undertake to inform and discuss the same with both the municipal environmental officer and the client served
- 8) The private waste operator will be responsible for collection of dead pets without extra charge to the owners (cats, dogs and parrots) and reporting of other dead animals for management by relevant authorities and departments
- 9) Waste collection involve litter management along, road reserves and other public places and removal of illegal dumpings' which fall under zone of operation of the particular waste collector
- 10) Any cleanup exercise facilitated by well-wishers shall be organized by the municipal environmental officer with liaison with firm collecting garbage in affected zone

PART VIII

COMPLAINS RESPONSE

- 1) The private waste handler / collector shall operate an office within the area of operation which shall be used among other things to receive complaints from clients served and a register of the same maintained
- 2) The private waste collector shall respond promptly to the complaints raised and ensure recurrent of the same does not happen
- 3) Where the private waste collector fails to respond to complaint (s) raised, the matter shall be reported to the municipal environmental officer who will take the necessary action
- 4) Complaint over waste management issue by private waste collectors against a member of the public shall be in written note and where the response is not forthcoming; the private waste handler shall report the matter to the municipal environmental officer who will take appropriate measures

PART IX FINANCE

- 1) Any private garbage collector before signing an agreement with municipality shall be required to proof financial ability to engage in refuse collection, transportation and or disposal services
- 2) The private garbage collector shall obtain a license / permit at a cost and conditions stipulated by the municipality from time to time
- 3) The private garbage collector shall levy and collect charges to all clients within area of jurisdiction as stipulated in the agreement with the municipality and any review of the same shall be subject to approval by the municipality

PART X GENERAL

- 1) Kapenguria municipality is the sole supervisor and regulator in waste handling (collection, disposal, sorting and recycling)
- 2) Private waste operator shall sign a contract of three years' renewal of the same shall depend on performance and competitive bidding

- 3) Kapenguria municipality shall take all reasonable and lawful measures including enacting the relevant By – laws aimed at ensuring that the private sector involvement in waste management is successful

The policy regulations shall be subject to review from time to time

ANNEX 4: STAKEHOLDERS AND PUBLIC PARTICIPATION PHOTOS

Public participation Mtelo Hall



Stakeholders meeting at Sirwo Hotel Kitale



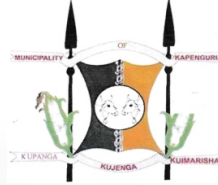
Public participation Youth Empowerment centre





Stakeholders Meeting at Horizon Hotel





COUNTY GOVERNMENT OF WEST POKOT KAPENGURIA MUNICIPALITY

kapengurjamunicipality.co.ke
info@kapenguriamunicipality.co.ke
Municipality@westpokot.go.ke

FEBRUARY 2026